

**NEW JERSEY'S LINK TO THE 21<sup>ST</sup> CENTURY:  
MAXIMIZING THE IMPACT OF INFRASTRUCTURE INVESTMENT**

Working Paper # 5

**Employment Trends in the Study Area**

by:

Raghavan Srinivasan, Dowling College, Long Island, New York  
Claire McKnight, City College of New York, New York, New York

October 18, 2000

This working paper was undertaken as part of the background research for the project: New Jersey's Link to the 21<sup>st</sup> Century: Maximizing the Impact of Infrastructure Investment. While many members contributed comments and suggestions, this is not an official expression of the research team. Further comments, suggestions, information, and insights are invited.

This project funded by the New Jersey Department of Transportation and the U.S. Department of Transportation through Region 2 of the University Transportation Centers Program.

## TABLE OF CONTENTS

	<u>Page</u>
List of Tables	3
List of Figures	4
1. Background	5
2. Trends in non-farm employment in different industries by labor area	6
3. Trends in covered employment in different counties by industry	7
- Overall trends	7
- Trends in individual counties in the study area	8
Bergen	8
Essex	8
Hudson	8
Hunterdon	9
Mercer	9
Middlesex	9
Monmouth	10
Morris	10
Ocean	10
Passaic	11
Somerset	11
Sussex	11
Union	11
Warren	12

## List of Tables

	<u>Page</u>
Table 1A: Non-farm employment (in 1000's) in different industries (by labor area) (Mining & Construction, Manufacturing)	13
Table 1B: Non-farm employment (in 1000's) in different industries (by labor area) (Wholesale Trade, Retail Trade)	14
Table 1C: Non-farm employment (in 1000's) in different industries (by labor area) (Transportation / Communications / Public Utilities, Finance / Insurance / Real Estate)	15
Table 1D: Non-farm employment (in 1000's) in different industries (by labor area) (Services, Public Administration)	16
Table 2A: Covered employment in different industries (by county) (Agriculture and Construction)	17
Table 2B: Covered employment in different industries (by county) (Manufacturing and Transportation)	18
Table 2C: Covered employment in different industries (by county) (Communications & public utilities, Wholesale trade)	19
Table 2D: Covered employment in different industries (by county) (Retail trade, Finance / insurance / real estate)	20
Table 2E: Covered employment in different industries (by county) (Services)	21

## List of Figures

	<u>Page</u>
Figure 1: Trends in non-farm employment in New Jersey and the study area	22
Figure 2: Trends in non-farm employment by labor area (Mining & Construction)	23
Figure 3: Trends in non-farm employment by labor area (Manufacturing)	24
Figure 4: Trends in non-farm employment by labor area (Transportation, Communication, & Public Utilities)	25
Figure 5: Trends in non-farm employment by labor area (Trade)	26
Figure 6: Trends in non-farm employment by labor area (Wholesale Trade)	27
Figure 7: Trends in non-farm employment by labor area (Retail Trade)	28
Figure 8: Trends in non-farm employment by labor area (Finance, Insurance, & Real Estate)	29
Figure 9: Trends in non-farm employment by labor area (Services)	30
Figure 10: Trends in non-farm employment by labor area (Public Administration – Government)	31
Figure 11: Private sector covered employment in the study area (1989-1997) (Bergen – Monmouth)	32
Figure 12: Private sector covered employment in the study area (1989-1997) (Morris – Warren)	33
Figure 13: Trends in covered employment (Bergen county)	34
Figure 14: Trends in covered employment (Essex county)	35
Figure 15: Trends in covered employment (Hudson county)	36
Figure 16: Trends in covered employment (Hunterdon county)	37
Figure 17: Trends in covered employment (Mercer county)	38
Figure 18: Trends in covered employment (Middlesex county)	39
Figure 19: Trends in covered employment (Monmouth county)	40
Figure 20: Trends in covered employment (Morris county)	41
Figure 21: Trends in covered employment (Ocean county)	42
Figure 22: Trends in covered employment (Passaic county)	43
Figure 23: Trends in covered employment (Somerset county)	44
Figure 24: Trends in covered employment (Sussex county)	45
Figure 25: Trends in covered employment (Union county)	46
Figure 26: Trends in covered employment (Warren county)	47

## 1. Background

The objective of this working paper is to show trends in employment in different industries in the study area. Two sets of tables and figures are presented to illustrate these trends.

Tables 1A through 1D, and figures 1 through 10 show trends in non-farm employment for different labor areas from 1980 to 1999. Labor areas are also called Primary Metropolitan Statistical Areas (PMSA's). In some cases, these labor areas consist of several counties. The study area consists of 14 counties that form 7 labor areas as indicated in the following table.

Labor Areas	Counties
Bergen county labor area	Bergen county
Jersey city labor area	Hudson county
Middlesex-Somerset-Hunterdon labor area	Middlesex county Somerset county Hunterdon county
Monmouth-Ocean labor area	Monmouth county Ocean county
Newark labor area	Essex county Morris county Sussex county Union county Warren county ( <i>was included in this labor area in 1982</i> )
Passaic county labor area	Passaic county
Trenton labor area	Mercer county

Tables 2A through 2D and figures 11 through 26 show trends in private sector covered employment<sup>1</sup> in the 14 county study area from 1991 to 1997.

Data on non-farm employment in the different labor areas were obtained from the following web site maintained by the U.S. Department of Labor: [www.bls.gov](http://www.bls.gov). Data on covered employment at the county level were obtained from the New Jersey Data Center: [www.state.nj.us/labor/lra/njsdc.htm](http://www.state.nj.us/labor/lra/njsdc.htm)

<sup>1</sup> Refers to workers of employers subject to the New Jersey unemployment compensation law. Basically, any employer paying at least \$1,000 in wages in the current or preceding calendar year is covered. Jobs not covered by the law fall mainly into the categories of self-employed and unpaid family workers or certain agricultural and in-home domestic workers. Since the data represent the aggregate number of jobs reported by individual employers at the workplace, the total job count does not correspond with the number of actual persons holding jobs. It should be noted that New Jersey laws defining covered employment have been amended on several occasions. Changes have been made in 1969, 1972, 1978, 1981, and 1988. Further information about covered employment can be found in the New Jersey Data Center: [www.state.nj.us/labor/lra/njsdc.htm](http://www.state.nj.us/labor/lra/njsdc.htm)

## 2. Trends in non-farm employment in different industries by labor area

Tables 1A through 1D show non-farm employment (in 1000's) in 1980, 1990, and 1999. Data are not reported for some labor areas in 1980 for the following reasons:

- (i) In 1982, Warren county was added to the Newark labor area. Hence, employment data after 1982 cannot be directly compared with numbers before 1982.
- (ii) The Monmouth-Ocean labor area and the Jersey City labor area did not record wholesale and retail trade employment figures until the middle or late 80's. Only the total trade employment was recorded.

Figure 1 shows the trend in total non-farm employment in New Jersey and the study area. Figures 2 through 10 show employment trends in different industries from 1980 to 1999. Each figure represents one industry division. Collectively, the tables and figures indicate the following:

- Overall, the total non-farm employment in New Jersey and the study area show similar trends (Figure 1). Employment in most industries peaked during the late 1980's and fell off during the recession in the early 90's. From 1992, most industries have experienced an increase in employment.
- Employment in manufacturing declined steadily during this twenty-year period. During the last 2 or 3 years manufacturing employment appears to be stabilized (Figure 3).
- Employment in the service industry increased significantly during this period. This industry was less affected by the recession compared to other industries (Figure 9).
- The Middlesex-Somerset-Hunterdon labor area and the Monmouth-Ocean labor area were less affected by the recession compared to the other labor areas.
- In addition to the service industry, the Middlesex-Somerset-Hunterdon labor area experienced continued employment growth in wholesale trade, transportation / communication / public utilities, and finance / insurance / real estate (Figures 4, 6, and 8).

### 3. Trends in covered employment in different counties by industry

Tables 2A through 2E show private sector employment in 1991 and 1997 for different counties. Figures 11 and 12 show trends in total private sector covered employment for different counties from 1989 to 1997. Figures 13 through 26 show employment trends in different industries in each county from 1991 to 1997. Given below are some overall trends and specific findings about individual counties:

#### Overall trends and observations

- In 1997, in the study area, 34.1% of jobs were in the service industry; 18.9% of jobs were in retail trade; 16.6% of jobs were in manufacturing; 8.9% of jobs were in wholesale trade; 8% of jobs were in finance, insurance, and real estate; 5.4% of jobs were in the transportation industry; 3.9% of jobs were in construction; 3.4% of jobs were in communication and public utilities; and, 0.8% of jobs were in agriculture. Comparing the employment in the different industries, employment in service, retail trade, and manufacturing is relatively high, whereas the employment in transportation, communications, construction, and agriculture is relatively low. Hence, strong or high growth in agriculture or construction may imply fewer jobs than moderate growth in retail trade or services.
- All counties in the study area except Essex and Hudson had strong employment growth in agriculture consistent with the overall trend in the state (Table 2A). However, it is important to understand that employment in agriculture represented less than 1% of total covered employment in the study area in 1997.
- All counties in the study area except Hunterdon and Ocean lost manufacturing jobs consistent with the overall trend in the state (Table 2A)
- All counties in the study area except Hudson, Hunterdon, Passaic, and Union, had strong employment growth in the transportation industry consistent with the overall trend in the state (Table 2B)
- All counties in the study except Essex had strong or moderate employment growth in retail trade (Table 2D)
- All counties in the study area had strong or moderate employment growth in the services industry consistent with the overall trend in the state (Table 2E)
- A recent article in the New York Times indicates that the pharmaceutical industry is consolidating in New Jersey<sup>2</sup>. “More than 40 percent of all new medicines approved the Food and Drug Administration in 1999 were developed by companies based in New Jersey”. This trend may lead to more jobs in this industry segment.

---

<sup>2</sup> New York Times, Sunday, February 6, 2000, Real Estate Section

## Trends in Individual Counties

### *Bergen*

- Experienced a 9.5% reduction in construction jobs; the state gained 9.2% in construction jobs during this period
- Employment in the transportation industry increased (by 32.4%); statewide, the gain was 16.7%
- Employment in communication and public utilities also increased (by 27.4%); statewide, the gain was only 5.4%
- Experienced a 2.9% reduction in retail trade employment; the state gained 7.4% during this period

### *Essex*

- Experienced slow growth in services (by 5.3%). Most of this growth was in health services (by 7.4%), “driven by changing demographic trends and advancing medical technology”<sup>3</sup>
- Large increase in transportation (by 23.2%), “due to growth in air transportation and trucking partly because of the dominance of the Newark International Airport in the county. Expansion of Continental airlines’ regional hub, introduction of Kiwi airlines and international traffic growth contributed to this increase”<sup>4</sup>
- Lost jobs in construction (by 13.2%); statewide, there was a 9.2% gain
- Significant loss in manufacturing (by 24.1%), more than the statewide loss of 13.1%
- Significant loss in communication & public utilities (by 27%); statewide, there was a 5.4% gain
- Loss in retail trade (by 6.3%); statewide, there was 7.4% gain

### *Hudson*

- Larger drop in manufacturing compared to the state (17.9% vs. 13.1%)
- Lost jobs in agriculture (by 2.6%) and construction (by 5.5%); statewide, there was an increase in these industries

---

<sup>3</sup> 1997 Regional Labor Market Review: Northern New Jersey Region, Office of Labor Planning and Analysis, New Jersey Data Center

<sup>4</sup> 1997 Regional Labor Market Review: Northern New Jersey Region, Office of Labor Planning and Analysis, New Jersey Data Center



- Experienced significant losses in wholesale trade (by 15.4%) and retail trade (by 6.3%); statewide, there was a small increase in these industries
- Employment in finance/insurance/real estate increased at a dramatic pace (by 56.8%) compared to statewide increase of only 3.2 percent

#### *Hunterdon*

- Significant increases in agriculture (by 52.8%), services (by 36.9%), wholesale trade (by 28.1%), retail trade (by 20.9%), and finance/insurance/real estate (by 10.7%) – more than the state as a whole in these industries
- Significant loss in the communication & public utilities industry (by 26.9%); statewide, there was a 5.4% gain
- Gained a small number of manufacturing jobs. “This was partly because of Merck, a pharmaceutical company, that moved in to the county in 1993”<sup>5</sup>

#### *Mercer*

- Significant increases in agriculture (by 48%), construction (by 18.8%), and retail trade (by 11.3%) – more than the state as a whole
- Significant loss in manufacturing (by 21.9%), more than the statewide loss of 13.1%
- Minor losses in communication & public utilities (by 4%) and wholesale trade (by 7.3%); statewide, there were small increases in these industries
- Moderate growth in services (by 14.6%) compared to the statewide increase of 21.4%

#### *Middlesex*

- Large increase in services (by 45.8%) especially in business, health, and engineering / management / accounting services; statewide, the increase was 21.4%. During 1991-1997, Middlesex experienced the largest increase in service employment (33015 jobs) in the study area.
- Manufacturing payrolls have continued their downward trend (9.8% loss from 1991 to 1997), but losses have eased markedly after 1995.
- Strong growth in agriculture (by 39.2%) and finance / insurance / real estate (by 15.2%); these were more than the statewide increases

---

<sup>5</sup> 1997 Regional Labor Market Review: Northern New Jersey Region, Office of Labor Planning and Analysis, New Jersey Data Center

### *Monmouth*

- Moderate growth in services (by 15.6%), especially health and business services
- Strong growth in construction (by 30.4%), wholesale trade (by 15.5%) and retail trade (by 13.1%); these were more than the statewide increases
- Employment in the communications industry increased dramatically (by 93.9%), but primarily because of “redistribution of employment from other areas within the state”<sup>6</sup>

### *Morris*

- Growth in the service industry (by 27.9%). This was mostly due to increase in business services.
- Minor losses in finance/insurance/real estate (by 4.9%); statewide there was a 3.2% gain.
- Strong growth in agriculture (by 37.4%), construction (by 26.5%), wholesale trade (by 28.9%) and retail trade (by 11.1%), more than the statewide growth during this period.
- Manufacturing lost jobs (by 6.8%) although less than the statewide reduction of 13.1%. “Employment in chemicals, the county’s largest manufacturing industry remained stable”<sup>7</sup>.

### *Ocean*

- Strong growth in construction (by 53.6%) compared to the statewide increase of 9.2%
- Strong growth in the service industry (by 26.1%). Most of the growth was in the health services area<sup>8</sup>.
- Lost jobs in communications (by 18.4%) and finance / insurance / real estate (by 18.6%); statewide there was small growth in these areas.
- Strong growth in retail trade (by 19.2%) and wholesale trade (by 25%), more than the statewide growth in these areas
- Strong growth in transportation (by 38%) – “mostly in the local and suburban passenger transportation segment”<sup>9</sup>.

---

<sup>6</sup> Regional Labor Market Review: Atlantic Coastal Region, Office of Labor Planning and Analysis, New Jersey Data Center, January 1998

<sup>7</sup> 1997 Regional Labor Market Review: Northern New Jersey Region, Office of Labor Planning and Analysis, New Jersey Data Center

<sup>8</sup> Regional Labor Market Review: Atlantic Coastal Region, Office of Labor Planning and Analysis, New Jersey Data Center, January 1998

<sup>9</sup> Regional Labor Market Review: Atlantic Coastal Region, Office of Labor Planning and Analysis, New Jersey Data Center, January 1998

- Strong growth in manufacturing (by 21.3%), although this industry comprises less than a tenth of the payrolls in this county.

#### *Passaic*

- Manufacturing employment decreased more rapidly than the state (21.9% vs. 13.2%)
- Relatively moderate growth in services compared to the state (10.5% vs. 21.4%)
- Strong growth in agriculture (by 56.7%); statewide there was a 24.6% increase
- Lost jobs in wholesale trade (by 9.9%) and finance / insurance / real estate (by 17%); statewide, there were minor gains in these areas.

#### *Somerset*

- Contrary to the rest of the state, employment growth in Somerset was stable or continued despite the 1990-1991 recession
- Significant increase in the communications industry (by 52%) compared to the state (by 5.4%)
- Manufacturing lost jobs (by 6.8%) although less than the statewide reduction of 13.1%
- Strong growth in wholesale (by 41.3%) and retail trade (by 16.8%), compared to the state
- Strong growth in the service industry (by 45.9%). During 1991-1997, Somerset experienced the largest percentage increase in service employment in the study area.

#### *Sussex*

- Employment in services (health, business, social, and amusement/recreation services) increased by 26.4%.
- Substantial increase in construction (by 37.9%) compared to 9.2% increase for the state during this period
- Substantial growth in the wholesale trade industry (by 43.1%); statewide, the increase was only 5%

#### *Union*

- All the major industries, except agriculture, either lost jobs or gained very few jobs
- Slow increase in services (by 2.1%): slower than the state's growth of 21.4%

*Warren*

- Dramatic increase in communications (by 91.8%), compared to the statewide increase of 5.4%
- Strong growth in construction (by 25.3%), compared to the modest growth statewide of 9.2%
- Substantial loss in finance / insurance / & real estate jobs (by 40%); statewide there was a small increase of 3.2

<b>Mining &amp; Construction</b>							
	1980	1990	1999	Growth (80-90)	%Growth (80-90)	Growth (90-99)	% Growth (90-99)
<b>Labor Area</b>							
Bergen	14.1	19.3	15.0	5.2	36.9%	-4.3	-22.3%
Jersey City	4.6	6.3	5.2	1.7	37.0%	-1.1	-17.5%
Middlesex-Somerset-Hunterdon	15.2	21.8	20.4	6.6	43.4%	-1.4	-6.4%
Monmouth-Ocean	10.9	16.4	18.6	5.5	50.5%	2.2	13.4%
Newark	NA	36.9	34.5	NA	NA	-2.4	-6.5%
Passaic	6.7	8.2	8.5	1.5	22.4%	0.3	3.7%
Trenton	3.3	4.6	4.8	1.3	39.4%	0.2	4.3%
Study Area	NA	113.5	107.0	NA	NA	-6.5	-5.7%
New Jersey	113.7	148.7	139.9	35.0	30.8%	-8.8	-5.9%

<b>Manufacturing</b>							
	1980	1990	1999	Growth (80-90)	%Growth (80-90)	Growth (90-99)	% Growth (90-99)
<b>Labor Area</b>							
Bergen	111.5	84.9	68.9	-26.6	-23.9%	-16.0	-18.8%
Jersey City	68.5	38.9	26.8	-29.6	-43.2%	-12.1	-31.1%
Middlesex-Somerset-Hunterdon	123.4	106.9	90.3	-16.5	-13.4%	-16.6	-15.5%
Monmouth-Ocean	30.2	26.0	20.2	-4.2	-13.9%	-5.8	-22.3%
Newark	NA	166.0	133.4	NA	NA	-32.6	-19.6%
Passaic	67.6	51.8	34.4	-15.8	-23.4%	-17.4	-33.6%
Trenton	33.9	27.3	16.4	-6.6	-19.5%	-10.9	-39.9%
Study Area	NA	501.8	390.4	NA	NA	-111.4	-22.2%
New Jersey	781.0	596.6	466.8	-184.4	-23.6%	-129.8	-21.8%

NA - Not Available

**Table 1A: Non-farm employment (in 1000's) in different industries (by labor area)**  
(Mining & Construction, Manufacturing)

Source: U.S. Department of Labor

Wholesale Trade							
	1980	1990	1999	Growth (80-90)	%Growth (80-90)	Growth (90-99)	% Growth (90-99)
<b>Labor Area</b>							
Bergen	46.3	61.3	60.0	15.0	32.4%	-1.3	-2.1%
Jersey City	NA	27.9	24.1	NA	NA	-3.8	-13.6%
Middlesex-Somerset-Hunterdon	29	48.0	53.1	19.0	65.5%	5.1	10.6%
Monmouth-Ocean	NA	13.1	16.4	NA	NA	3.3	25.2%
Newark	NA	64.0	67.5	NA	NA	3.5	5.5%
Passaic	11.9	14.9	14.2	3.0	25.2%	-0.7	-4.7%
Trenton	5.3	7.1	6.8	1.8	34.0%	-0.3	-4.2%
Study Area	NA	236.3	242.1	NA	NA	5.8	2.5%
New Jersey	200.4	275.2	287.5	74.8	37.3%	12.3	4.5%

Retail Trade							
	1980	1990	1999	Growth (80-90)	%Growth (80-90)	Growth (90-99)	% Growth (90-99)
<b>Labor Area</b>							
Bergen	69.3	74.7	74.4	5.4	7.8%	-0.3	-0.4%
Jersey City	NA	34.9	34.2	NA	NA	-0.7	-2.0%
Middlesex-Somerset-Hunterdon	61.9	84.7	93.7	22.8	36.8%	9.0	10.6%
Monmouth-Ocean	NA	75.9	85.1	NA	NA	9.2	12.1%
Newark	NA	129.6	131.1	NA	NA	1.5	1.2%
Passaic	28.2	32.5	32.5	4.3	15.2%	0.0	0.0%
Trenton	19.7	24.2	26.8	4.5	22.8%	2.6	10.7%
Study Area	NA	456.5	477.8	NA	NA	21.3	4.7%
New Jersey	479.9	589	618.8	109.1	22.7%	29.8	5.1%

NA - Not Available

**Table 1B: Non-farm employment (in 1000's) in different industries (by labor area)**  
(Wholesale Trade and Retail Trade)

Source: U.S. Department of Labor

<b>Transportation, Communication, Public Utilities</b>							
	1980	1990	1999	Growth (80-90)	%Growth (80-90)	Growth (90-99)	% Growth (90-99)
<b>Labor Area</b>							
Bergen	20.8	23.1	30.4	2.3	11.1%	7.3	31.6%
Jersey City	26.8	30.6	30.3	3.8	14.2%	-0.3	-1.0%
Middlesex-Somerset-Hunterdon	33.5	42.5	48.7	9.0	26.9%	6.2	14.6%
Monmouth-Ocean	8.9	14.9	19.6	6.0	67.4%	4.7	31.5%
Newark	NA	76.0	85.1	NA	NA	9.1	12.0%
Passaic	6.7	6.1	6.9	-0.6	-9.0%	0.8	13.1%
Trenton	5.5	7.2	7.3	1.7	30.9%	0.1	1.4%
Study Area	NA	200.4	228.3	NA	NA	27.9	13.9%
New Jersey	194.5	232.2	263.4	37.7	19.4%	31.2	13.4%

<b>Finance, Insurance, &amp; Real Estate</b>							
	1980	1990	1999	Growth (80-90)	%Growth (80-90)	Growth (90-99)	% Growth (90-99)
<b>Labor Area</b>							
Bergen	17.1	27.0	29.4	9.9	57.9%	2.4	8.9%
Jersey City	8.7	16.5	28.1	7.8	89.7%	11.6	70.3%
Middlesex-Somerset-Hunterdon	15.5	42.1	47.1	26.6	171.6%	5.0	11.9%
Monmouth-Ocean	11.8	19.5	18.7	7.7	65.3%	-0.8	-4.1%
Newark	NA	75.9	76.4	NA	NA	0.5	0.7%
Passaic	9.2	10.7	8.9	1.5	16.3%	-1.8	-16.8%
Trenton	7.5	11.3	11.2	3.8	50.7%	-0.1	-0.9%
Study Area	NA	203.0	219.8	NA	NA	16.8	8.3%
New Jersey	158.1	238.7	256.5	80.6	51.0%	17.8	7.5%

NA - Not Available

**Table 1C: Non-farm employment (in 1000's) in different industries (by labor area)**  
(Finance / Insurance / Real Estate, and Transportation / Communication / Public Utilities)

Source: U.S. Department of Labor

	<b>Services</b>						
	1980	1990	1999	Growth (80-90)	%Growth (80-90)	Growth (90-99)	% Growth (90-99)
<b>Labor Area</b>							
Bergen	74.0	116.7	157.8	42.7	57.7%	41.1	35.2%
Jersey City	31.8	49.4	60.6	17.6	55.3%	11.2	22.7%
Middlesex-Somerset-Hunterdon	60.7	121.4	199.9	60.7	100.0%	78.5	64.7%
Monmouth-Ocean	60.4	99.9	133.1	39.5	65.4%	33.2	33.2%
Newark	NA	272.5	315.8	NA	NA	43.3	15.9%
Passaic	33.2	45.5	54.5	12.3	37.0%	9.0	19.8%
Trenton	41.8	59.7	75.4	17.9	42.8%	15.7	26.3%
Study Area	NA	765.1	997.1	NA	NA	232.0	30.3%
New Jersey	603.1	978.0	1262.1	374.9	62.2%	284.1	29.0%

	<b>Public Administration</b>						
	1980	1990	1999	Growth (80-90)	%Growth (80-90)	Growth (90-99)	% Growth (90-99)
<b>Labor Area</b>							
Bergen	41.7	45.4	43.2	3.7	8.9%	-2.2	-4.8%
Jersey City	43.2	41.7	38.4	-1.5	-3.5%	-3.3	-7.9%
Middlesex-Somerset-Hunterdon	69.7	75.8	79.2	6.1	8.8%	3.4	4.5%
Monmouth-Ocean	55.7	65.8	64.1	10.1	18.1%	-1.7	-2.6%
Newark	NA	143.9	141.6	NA	NA	-2.3	-1.6%
Passaic	25.4	25.9	27.2	0.5	2.0%	1.3	5.0%
Trenton	45.1	56.5	51.5	11.4	25.3%	-5.0	-8.8%
Study Area	NA	455.0	445.2	NA	NA	-9.8	-2.2%
New Jersey	529.7	576.7	571.7	47.0	8.9%	-5.0	-0.9%

NA - Not Available

**Table 1D: Non-farm employment (in 1000's) in different industries (by labor area)**  
(Services, Public Administration)

Source: U.S. Department of Labor



	<b>Agriculture</b>				<b>Construction</b>			
	1991	1997	Growth (91-97)	%Growth (91-97)	1991	1997	Growth (91-97)	%Growth (91-97)
<b>County</b>								
Bergen	2,340	2,875	535	22.9%	15,171	13,734	-1,437	-9.5%
Essex	923	888	-35	-3.8%	10,810	9,380	-1,430	-13.2%
Hudson	194	189	-5	-2.6%	4,632	4,379	-253	-5.5%
Hunterdon	578	883	305	52.8%	1,975	2,356	381	19.3%
Mercer	889	1,316	427	48.0%	3,694	4,390	696	18.8%
Middlesex	1,490	2,074	584	39.2%	9,959	10,334	375	3.8%
Monmouth	2,206	2,798	592	26.8%	8,063	10,515	2,452	30.4%
Morris	1,813	2,491	678	37.4%	7,080	8,954	1,874	26.5%
Ocean	883	1,027	144	16.3%	4,206	6,462	2,256	53.6%
Passaic	538	843	305	56.7%	6,647	7,470	823	12.4%
Somerset	1,044	1,240	196	18.8%	4,722	5,545	823	17.4%
Sussex	254	404	150	59.1%	1,231	1,697	466	37.9%
Union	710	1,085	375	52.8%	8,709	8,687	-22	-0.3%
Warren	501	598	97	19.4%	1,089	1,364	275	25.3%
Study Area	14,363	18,711	4,348	30.3%	87,988	95,267	7,279	8.3%
New Jersey	23,210	28,913	5,703	24.6%	119,602	130,636	11,034	9.2%

**Table 2A: Covered employment in different industries (by county)**  
(Agriculture & Construction)

Source: New Jersey Data  
Center

	Manufacturing				Transportation			
	1991	1997	Growth (91-97)	%Growth (91-97)	1991	1997	Growth (91-97)	%Growth (91-97)
<b>County</b>								
Bergen	78,780	68,770	-10,010	-12.7%	14,252	18,866	4,614	32.4%
Essex	49,984	37,919	-12,065	-24.1%	22,067	27,184	5,117	23.2%
Hudson	34,880	28,633	-6,247	-17.9%	23,226	23,233	7	0.0%
Hunterdon	7,423	7,733	310	4.2%	765	808	43	5.6%
Mercer	25,462	19,890	-5,572	-21.9%	3,366	3,990	624	18.5%
Middlesex	71,381	64,393	-6,988	-9.8%	14,058	16,851	2,793	19.9%
Monmouth	17,543	14,189	-3,354	-19.1%	4,691	5,355	664	14.2%
Morris	39,881	37,172	-2,709	-6.8%	6,682	7,986	1,304	19.5%
Ocean	5,678	6,887	1,209	21.3%	1,921	2,651	730	38.0%
Passaic	47,721	37,153	-10,568	-22.1%	3,842	3,836	-6	-0.2%
Somerset	22,195	20,686	-1,509	-6.8%	3,236	4,120	884	27.3%
Sussex	2,787	2,725	-62	-2.2%	963	1,109	146	15.2%
Union	53,568	48,492	-5,076	-9.5%	14,390	14,394	4	0.0%
Warren	8,986	8,369	-617	-6.9%	830	940	110	13.3%
Study Area	466,269	403,011	-63,258	-13.6%	114,289	131,323	17,034	14.9%
New Jersey	553,278	480,981	-72,297	-13.1%	133,481	155,760	22,279	16.7%

**Table 2B: Covered employment in different industries (by county)**  
(Manufacturing & Transportation)

Source: New Jersey Data Center

	Communication & Public Utilities				Wholesale Trade			
	1991	1997	Growth (91-97)	%Growth (91-97)	1991	1997	Growth (91-97)	%Growth (91-97)
<b>County</b>								
Bergen	6,928	8,829	1,901	27.4%	54,563	53,932	-631	-1.2%
Essex	10,836	7,908	-2,928	-27.0%	21,475	22,358	883	4.1%
Hudson	4,449	3,305	-1,144	-25.7%	25,519	21,587	-3,932	-15.4%
Hunterdon	624	456	-168	-26.9%	1,426	1,826	400	28.1%
Mercer	2,987	2,868	-119	-4.0%	6,921	6,413	-508	-7.3%
Middlesex	10,053	8,612	-1,441	-14.3%	33,576	35,359	1,783	5.3%
Monmouth	4,848	9,400	4,552	93.9%	9,037	10,435	1,398	15.5%
Morris	12,020	11,918	-102	-0.8%	14,645	18,882	4,237	28.9%
Ocean	2,724	2,222	-502	-18.4%	3,138	3,921	783	25.0%
Passaic	2,259	2,507	248	11.0%	13,232	11,926	-1,306	-9.9%
Somerset	11,967	18,193	6,226	52.0%	8,329	11,767	3,438	41.3%
Sussex	350	343	-7	-2.0%	877	1,255	378	43.1%
Union	5,691	5,783	92	1.6%	19,108	16,689	-2,419	-12.7%
Warren	389	746	357	91.8%	947	1,035	88	9.3%
Study Area	76,125	83,090	6,965	9.1%	212,793	217,385	4,592	2.2%
New Jersey	90,380	95,261	4,881	5.4%	260,077	273,014	12,937	5.0%

**Table 2C: Covered employment in different industries (by county)**  
 (Communications & public utilities and Wholesale trade)

Source: New Jersey Data Center

	Retail Trade				Finance, Insurance, & Real Estate			
	1991	1997	Growth (91-97)	%Growth (91-97)	1991	1997	Growth (91-97)	%Growth (91-97)
<b>County</b>								
Bergen	70,527	72,547	2,020	2.9%	25,309	25,017	-292	-1.2%
Essex	43,975	41,186	-2,789	-6.3%	30,699	30,691	-8	0.0%
Hudson	31,516	32,037	521	1.7%	15,973	25,046	9,073	56.8%
Hunterdon	7,025	8,491	1,466	20.9%	2,112	2,337	225	10.7%
Mercer	22,718	25,280	2,562	11.3%	10,608	10,948	340	3.2%
Middlesex	52,942	58,114	5,172	9.8%	23,093	26,612	3,519	15.2%
Monmouth	43,724	49,469	5,745	13.1%	11,695	11,848	153	1.3%
Morris	34,231	38,038	3,807	11.1%	21,678	20,622	-1,056	-4.9%
Ocean	28,370	33,817	5,447	19.2%	6,413	5,220	-1,193	-18.6%
Passaic	29,240	31,816	2,576	8.8%	10,012	8,309	-1,703	-17.0%
Somerset	20,038	23,404	3,366	16.8%	13,325	13,538	213	1.6%
Sussex	5,945	6,510	565	9.5%	2,129	2,074	-55	-2.6%
Union	30,047	31,600	1,553	5.2%	12,541	11,848	-693	-5.5%
Warren	6,342	6,795	453	7.1%	1,498	899	-599	-40.0%
Study Area	426,640	459,104	32,464	7.6%	187,085	195,009	7,924	4.2%
New Jersey	555,238	596,548	41,310	7.4%	221,312	228,287	6,975	3.2%

**Table 2D: Covered employment in different industries (by county)**  
(Retail Trade and Finance, Insurance, & Real Estate)

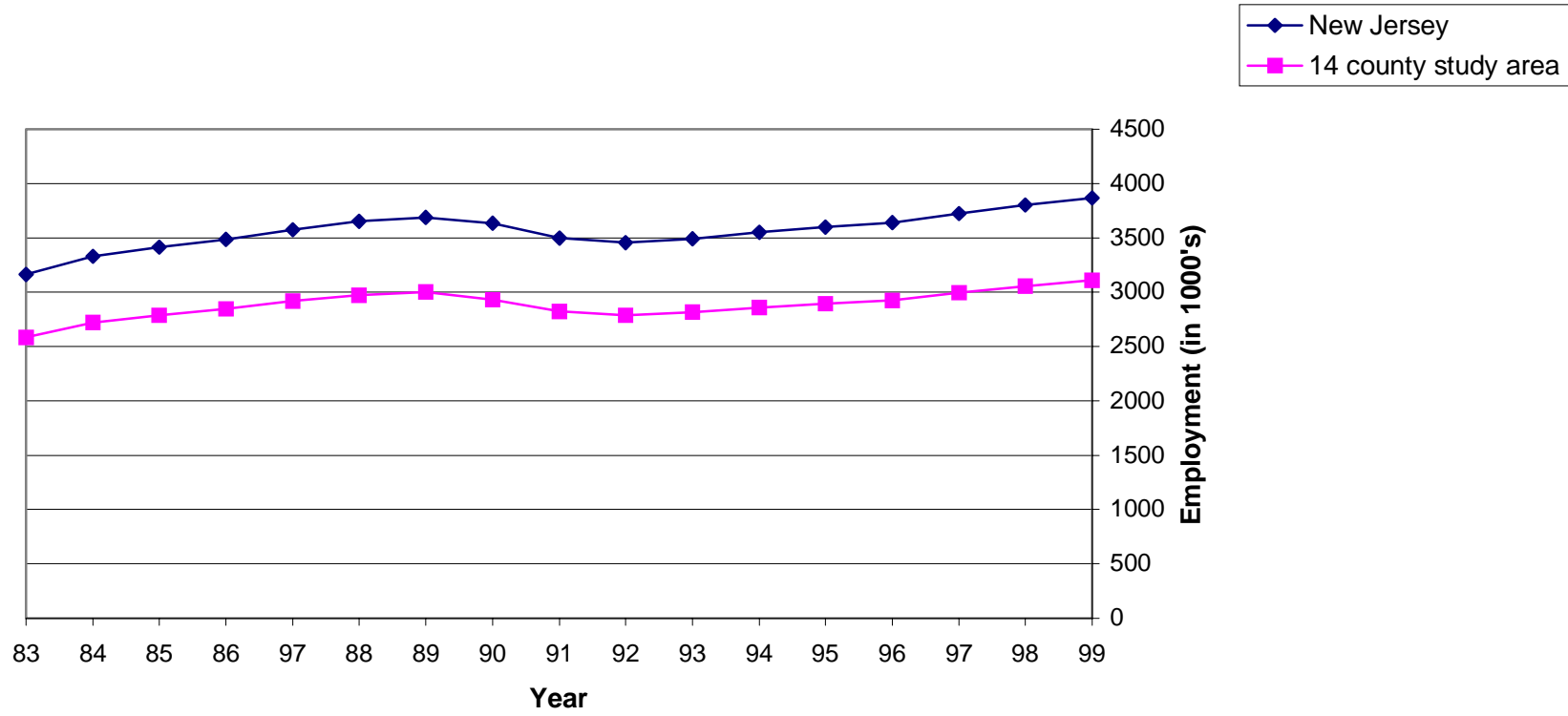
Source: New Jersey Data Center

	<b>Services</b>			
	1991	1997	Growth (91-97)	%Growth (91-97)
<b>County</b>				
Bergen	102,542	128,805	26,263	25.6%
Essex	104,402	109,980	5,578	5.3%
Hudson	43,013	52,251	9,238	21.5%
Hunterdon	7,980	10,923	2,943	36.9%
Mercer	52,316	59,934	7,618	14.6%
Middlesex	72,011	105,026	33,015	45.8%
Monmouth	60,059	69,408	9,349	15.6%
Morris	61,864	79,116	17,252	27.9%
Ocean	31,466	39,663	8,197	26.1%
Passaic	41,320	45,675	4,355	10.5%
Somerset	33,650	49,108	15,458	45.9%
Sussex	7,941	10,034	2,093	26.4%
Union	59,901	62,668	2,767	4.6%
Warren	6,038	6,998	960	15.9%
Study Area	684,503	829,589	145,086	21.2%
New Jersey	891,512	1,082,393	190,881	21.4%

**Table 2E: Covered employment in different industries (by county)**  
(Services)

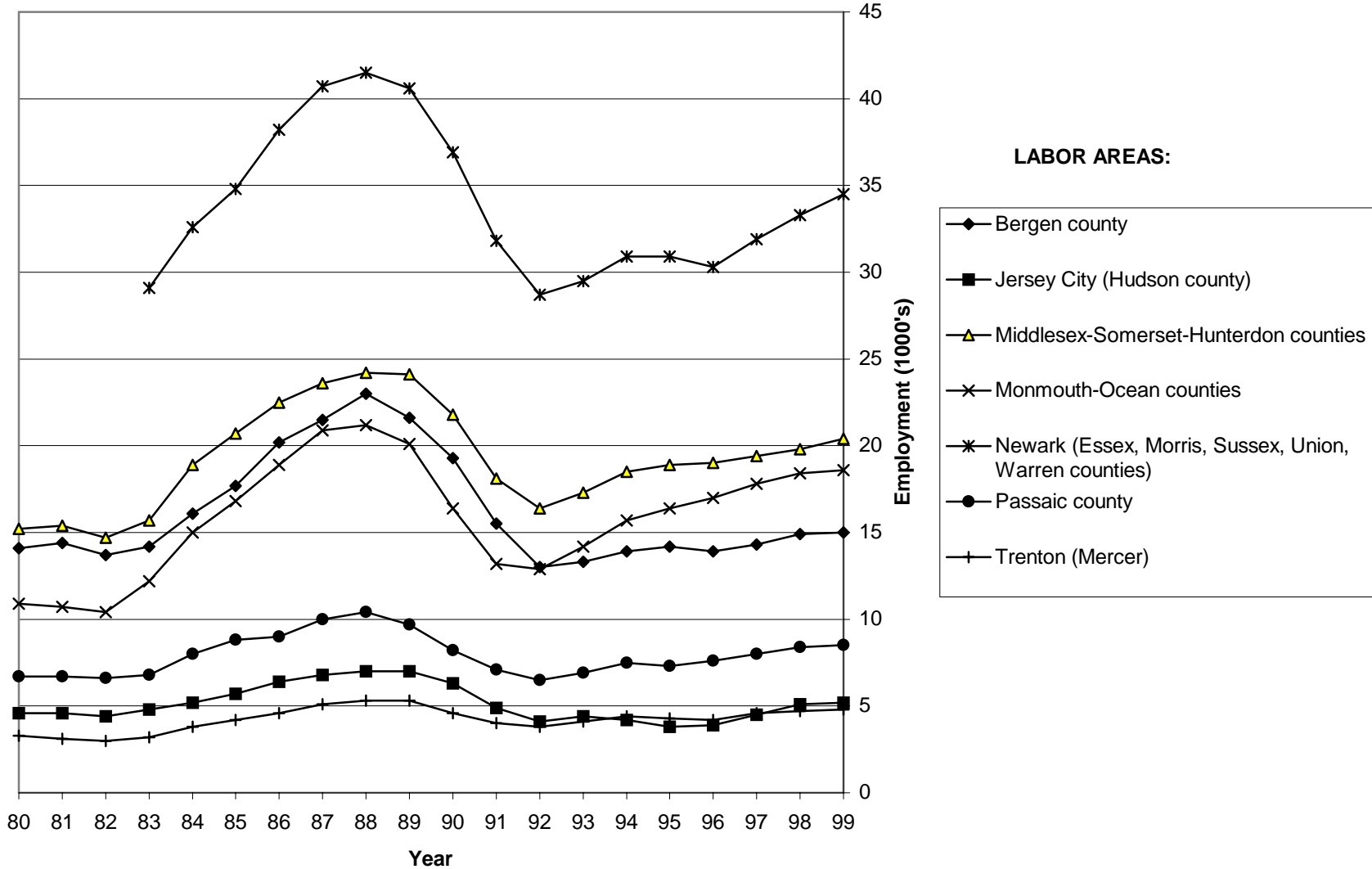
Source: New Jersey Data  
Center

Figure 1: Trends in Non-Farm Employment in New Jersey and the Study Area



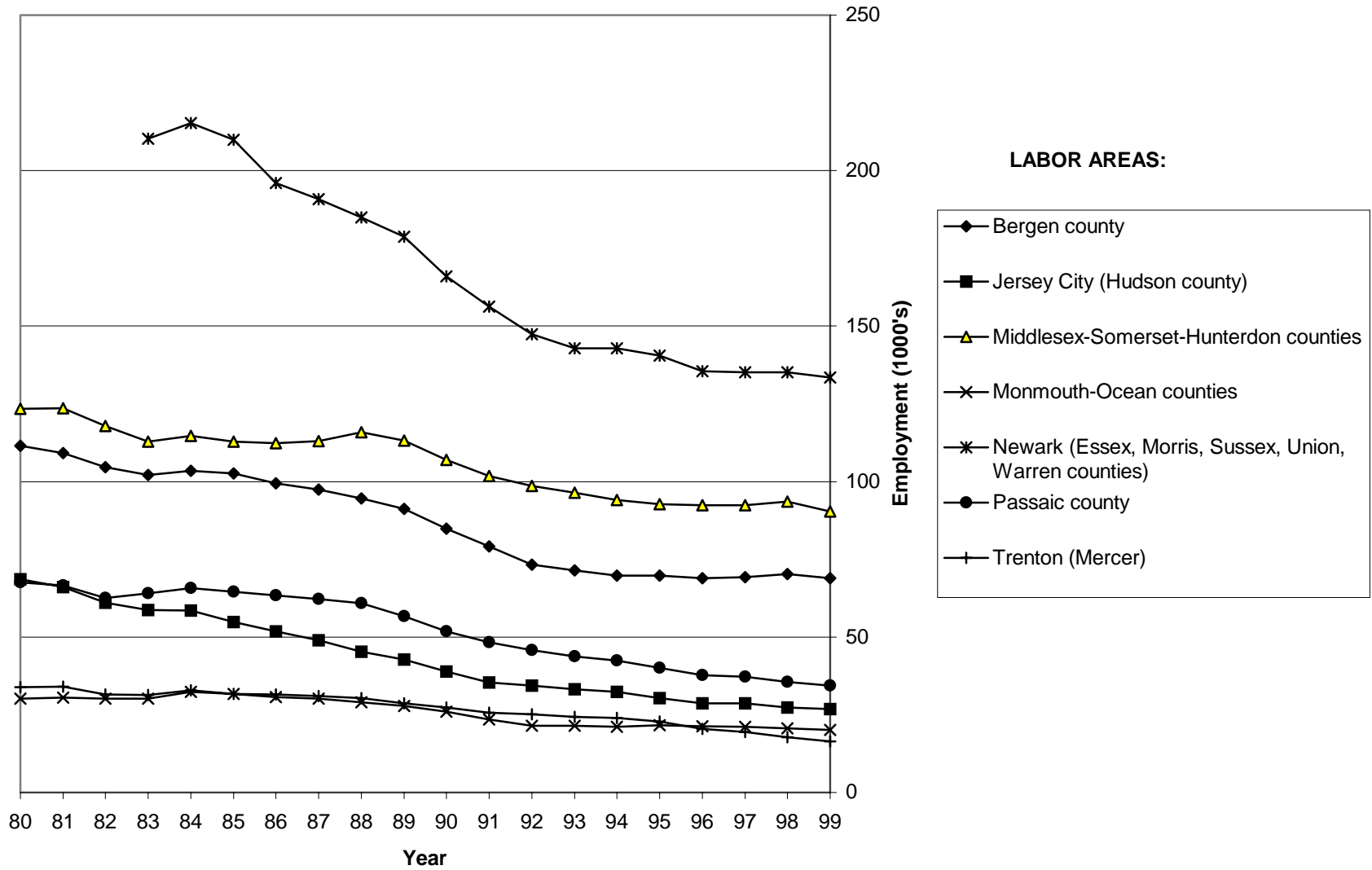
Source: U.S. Department of Labor

Figure 2: Trends in non-farm employment (Mining & Construction)



Source: U.S. Department of Labor

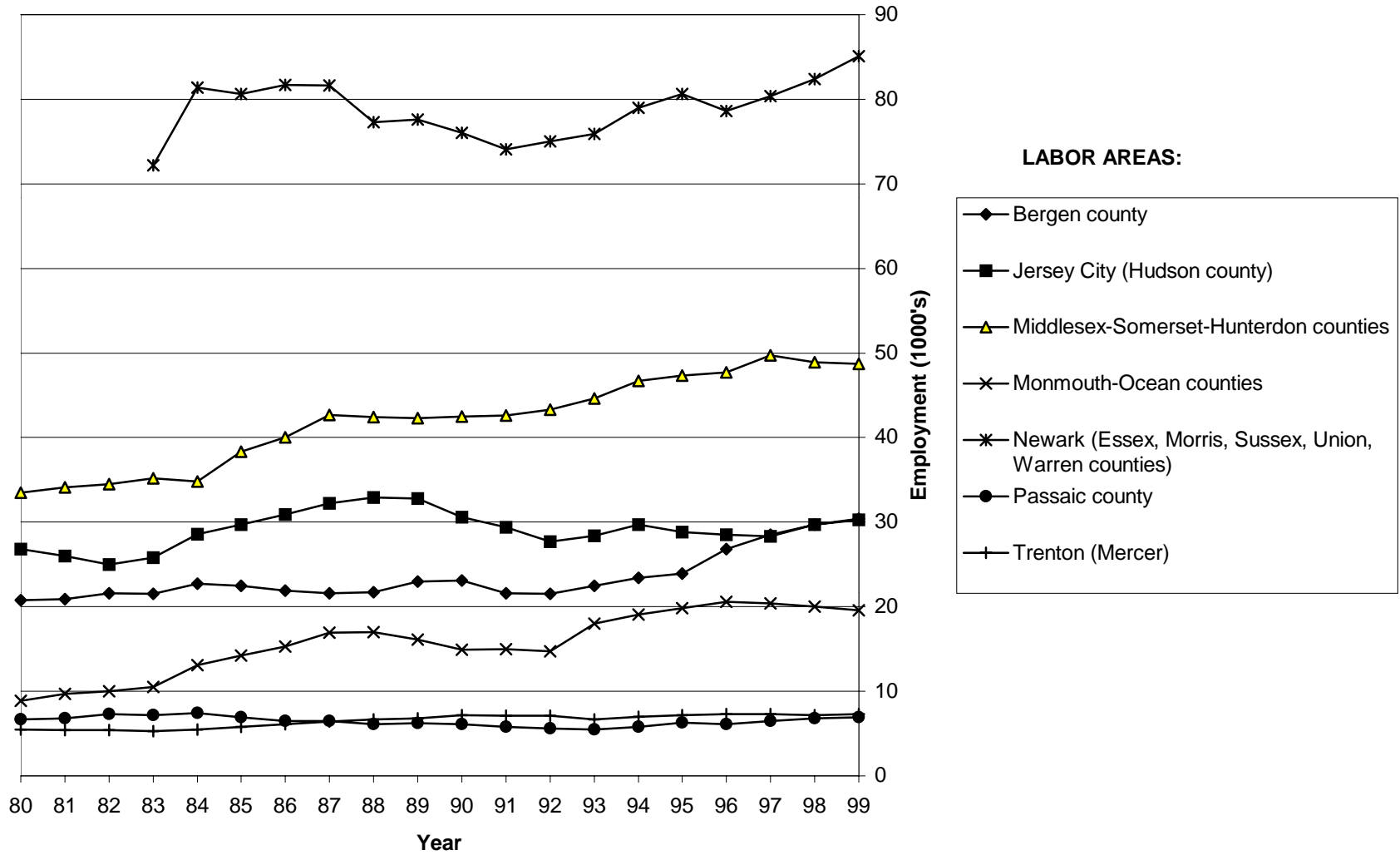
Figure 3: Trends in non-farm employment (Manufacturing)



Source: U.S. Department of Labor

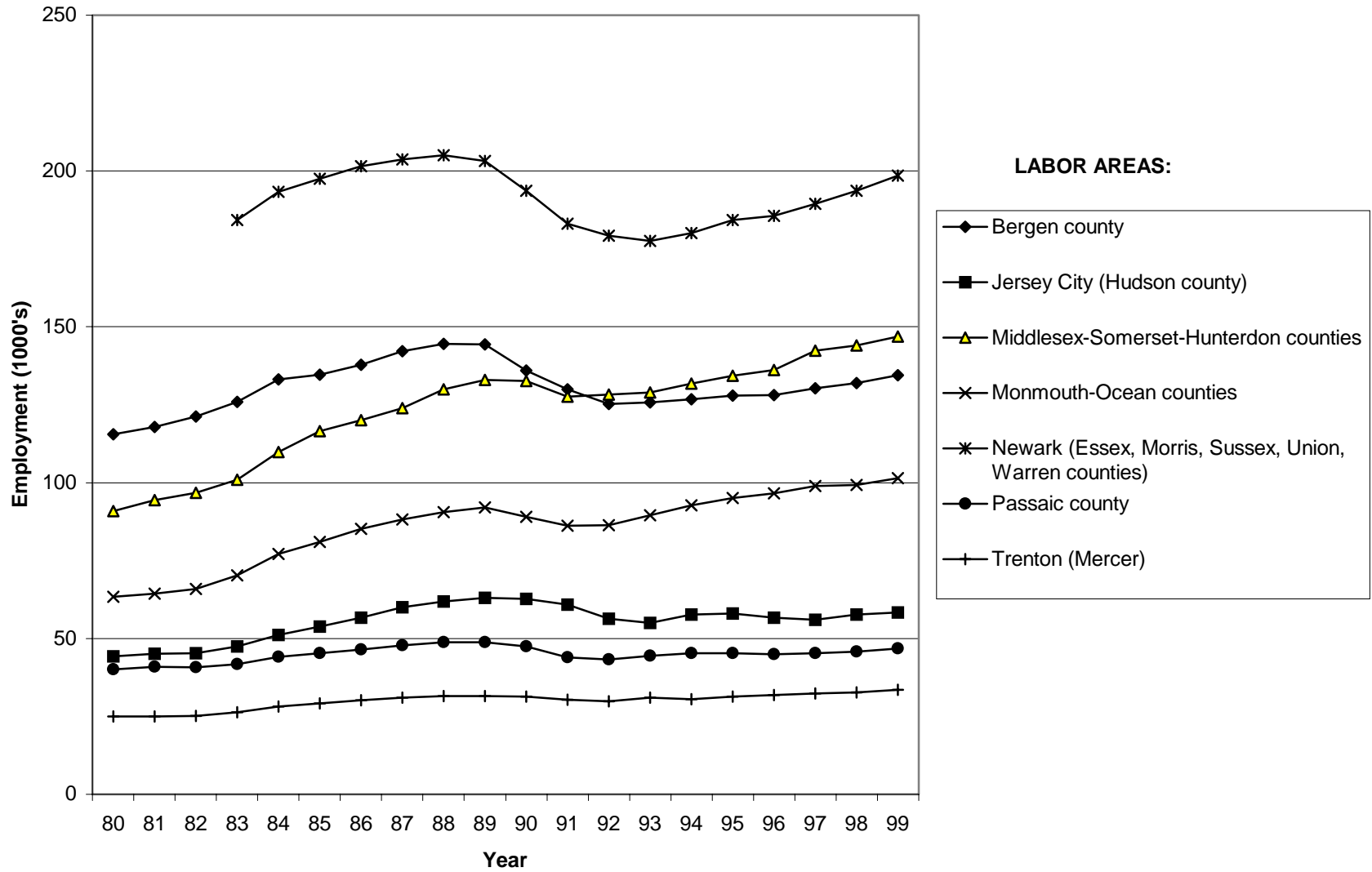


**Figure 4: Trends in non-farm employment (Transportation, Communications, & Public Utilities)**



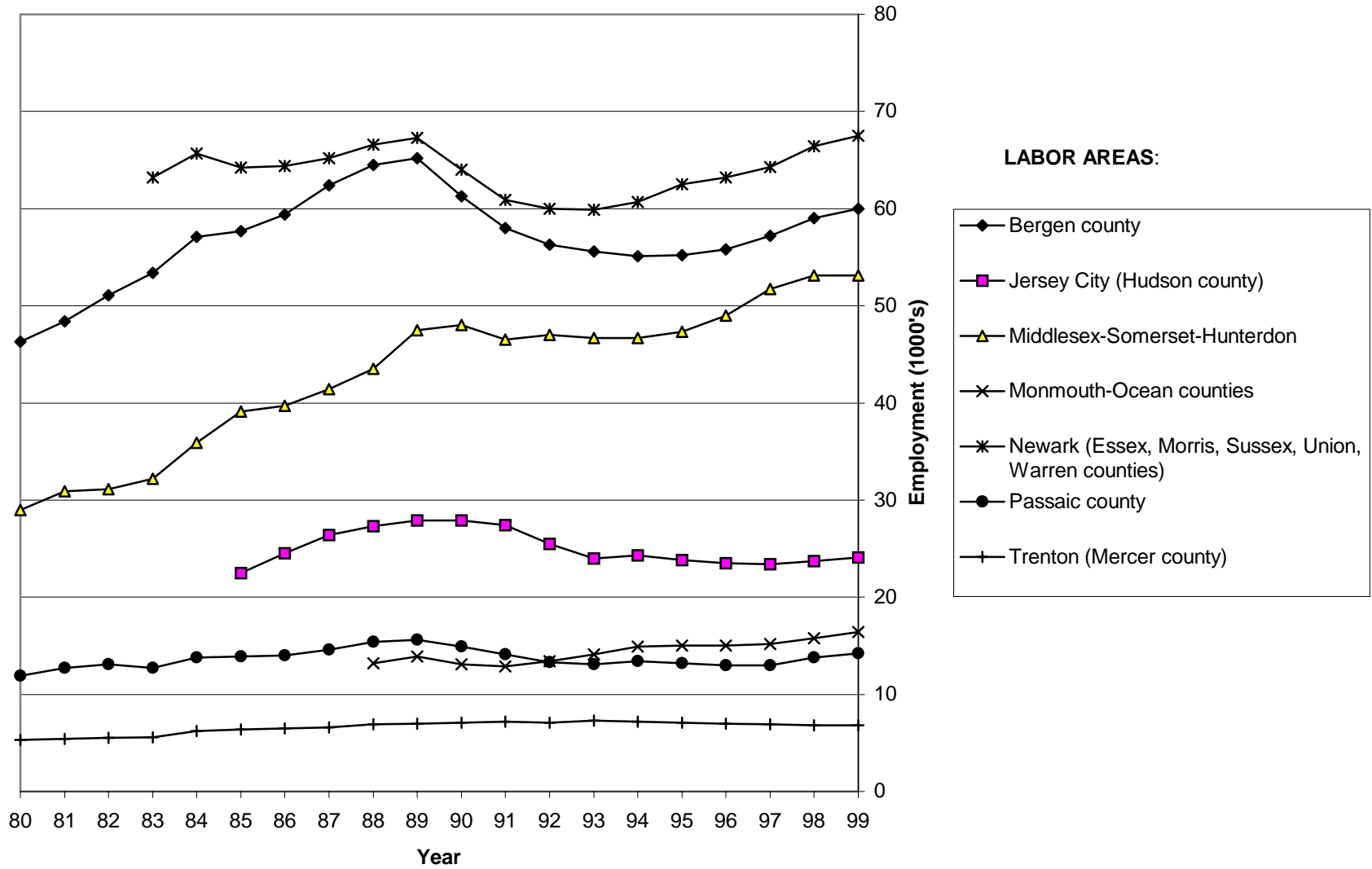
Source: U.S. Department of Labor

Figure 5: Trends in non-farm employment (Trade: Wholesale + Retail)



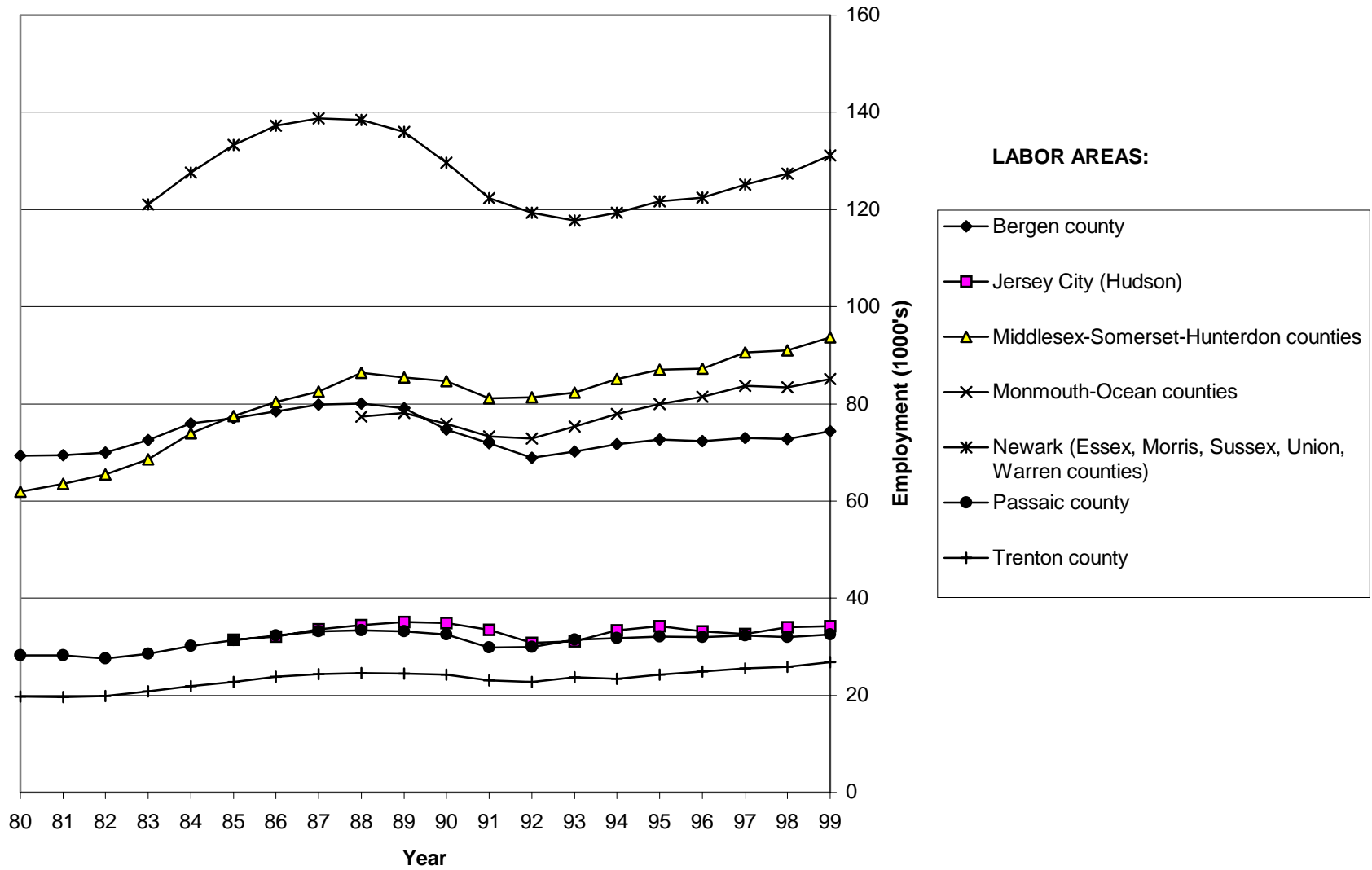
Source: U.S. Department of Labor

Figure 6: Trends in non-farm employment (Wholesale)



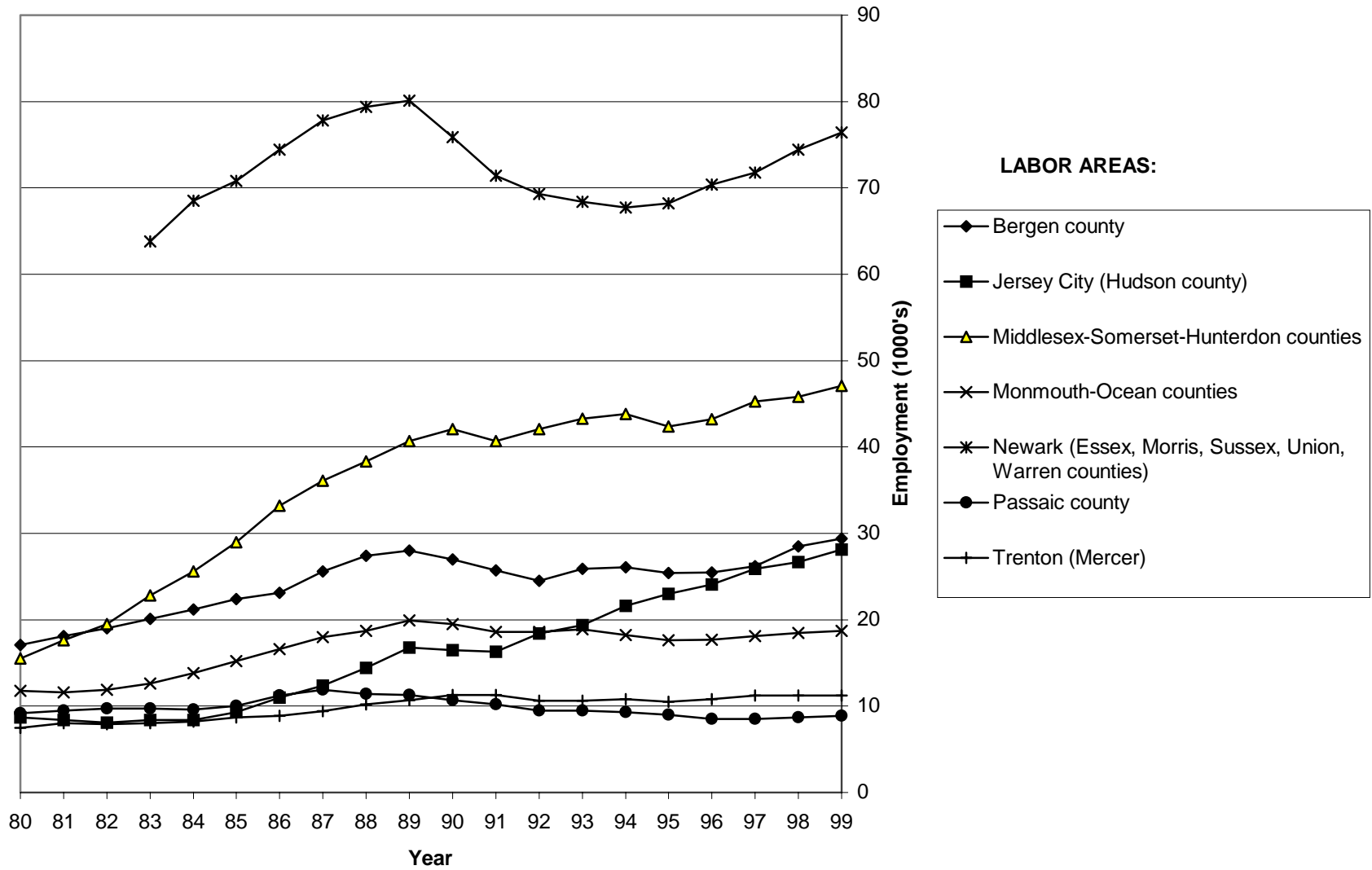
Source: U.S. Department of Labor

Figure 7: Trends in non-farm employment (Retail Trade)



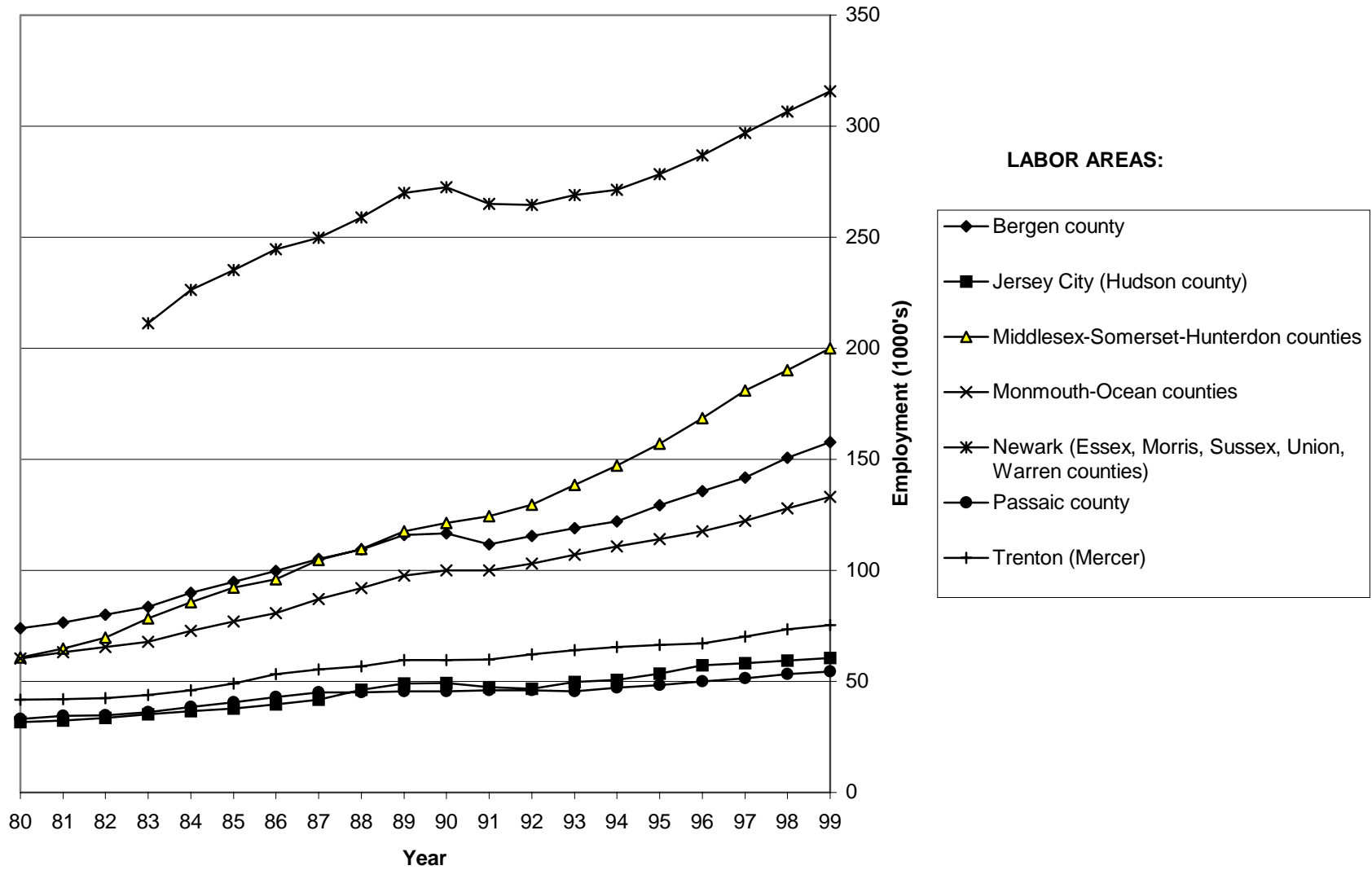
Source: U.S. Department of Labor

**Figure 8: Trends in non-farm employment (Finance, Insurance, & Real Estate)**



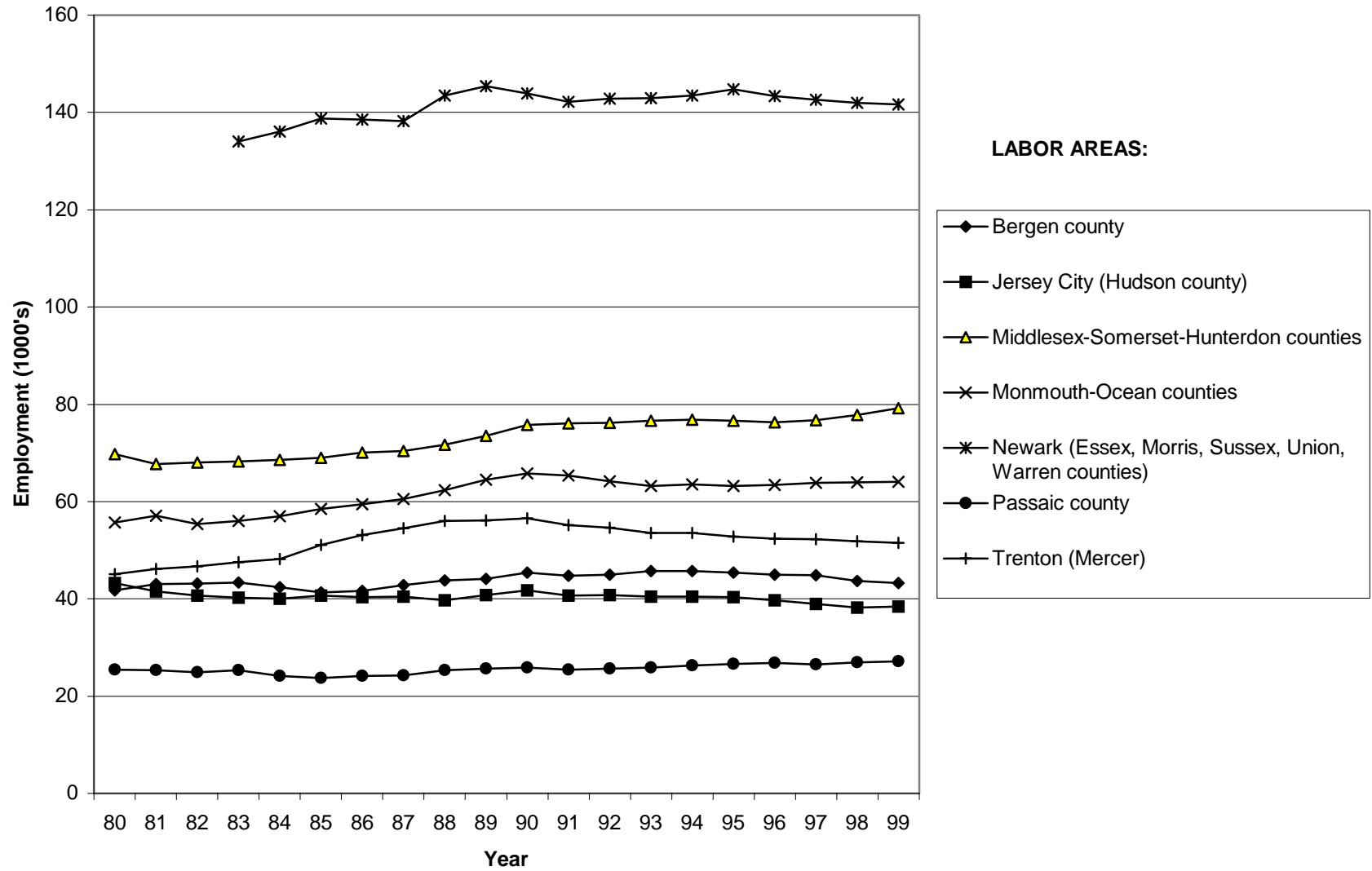
Source: U.S. Department of Labor

Figure 9: Trends in non-farm employment (Services)



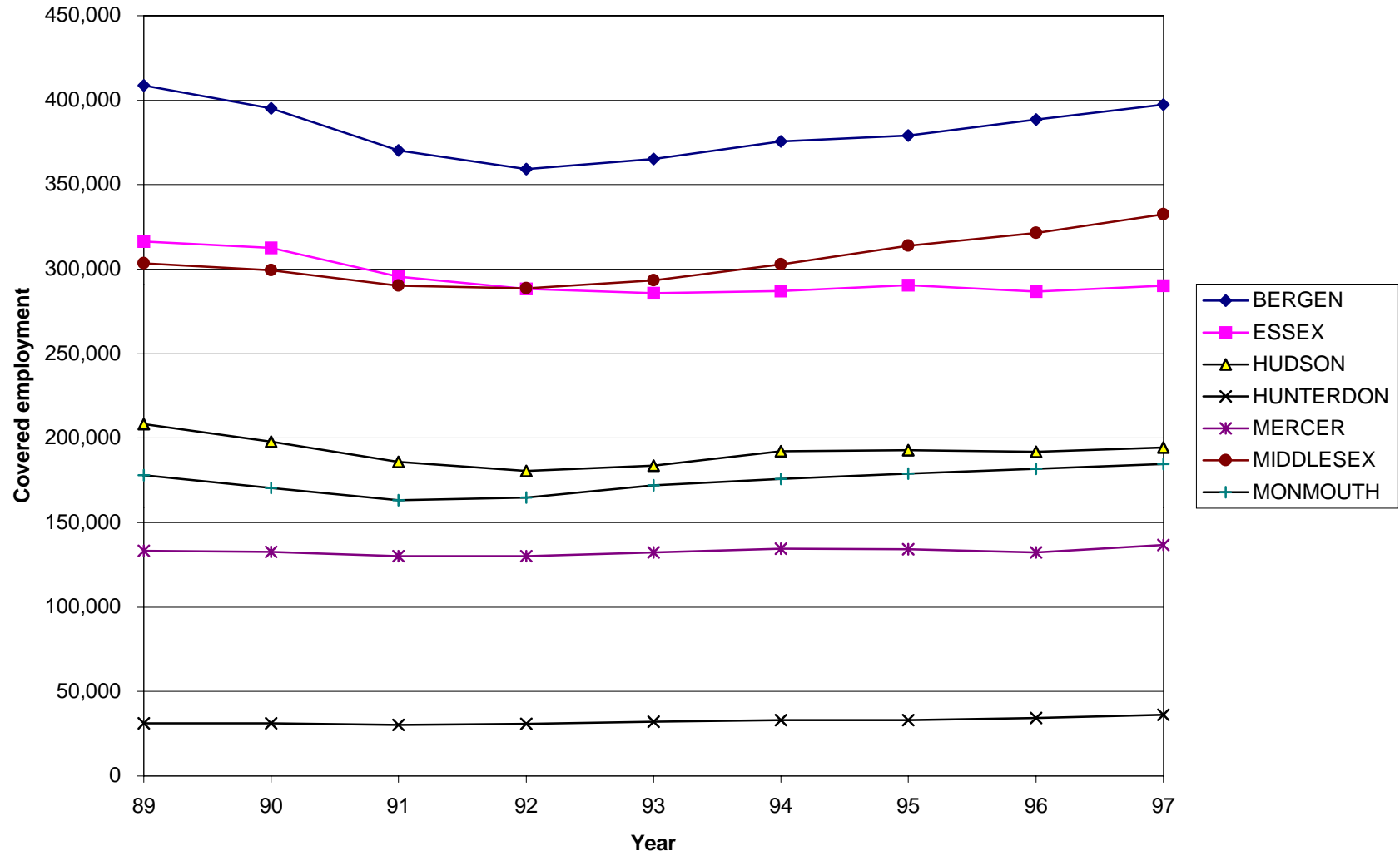
Source: U.S. Department of Labor

Figure 10: Trends in non-farm employment (Public Administration - Government)



Source: U.S. Department of Labor

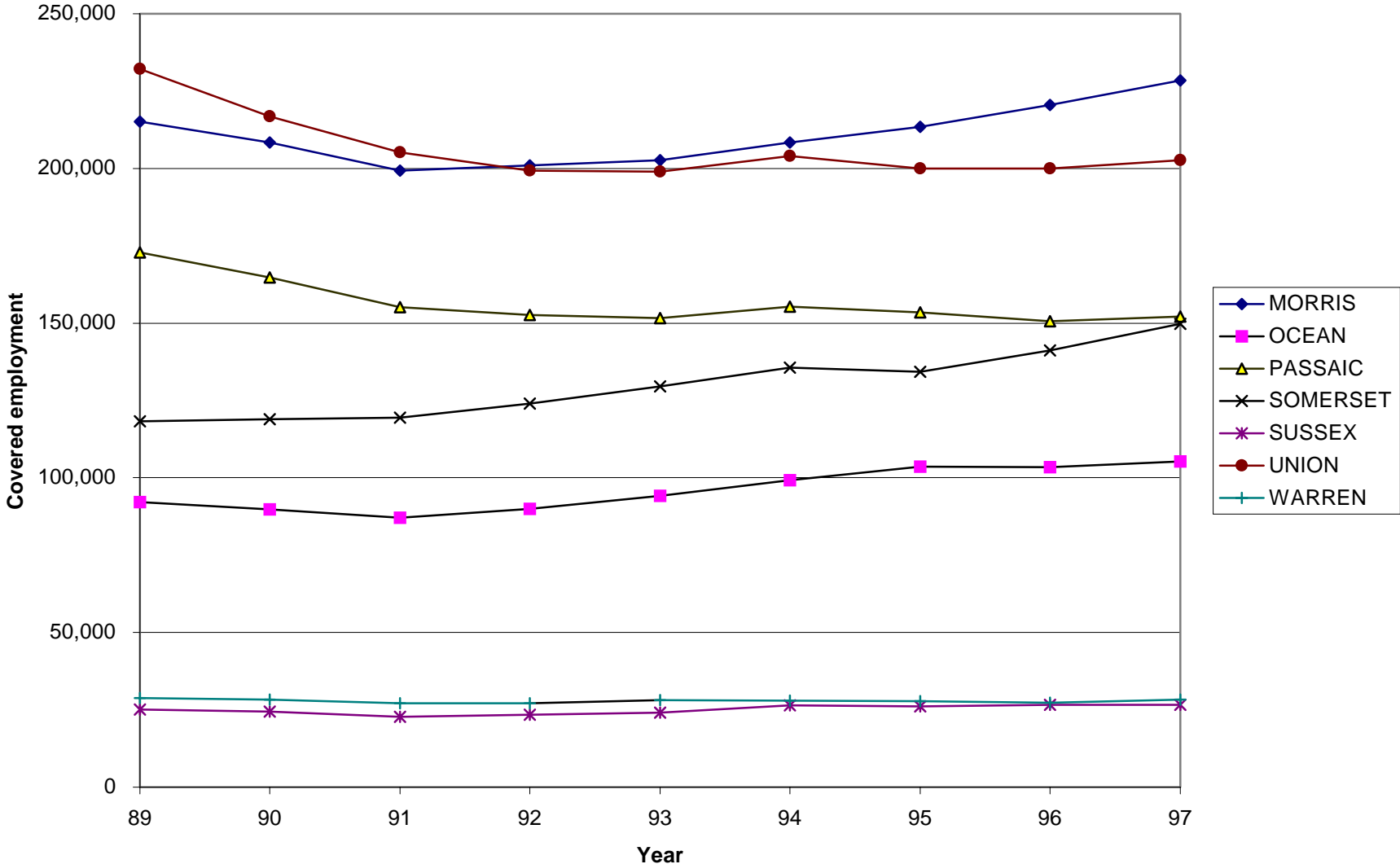
**Figure 11: Private sector covered employment in the study area (1989-1997) (Bergen - Monmouth)**



Source: New Jersey Data Center

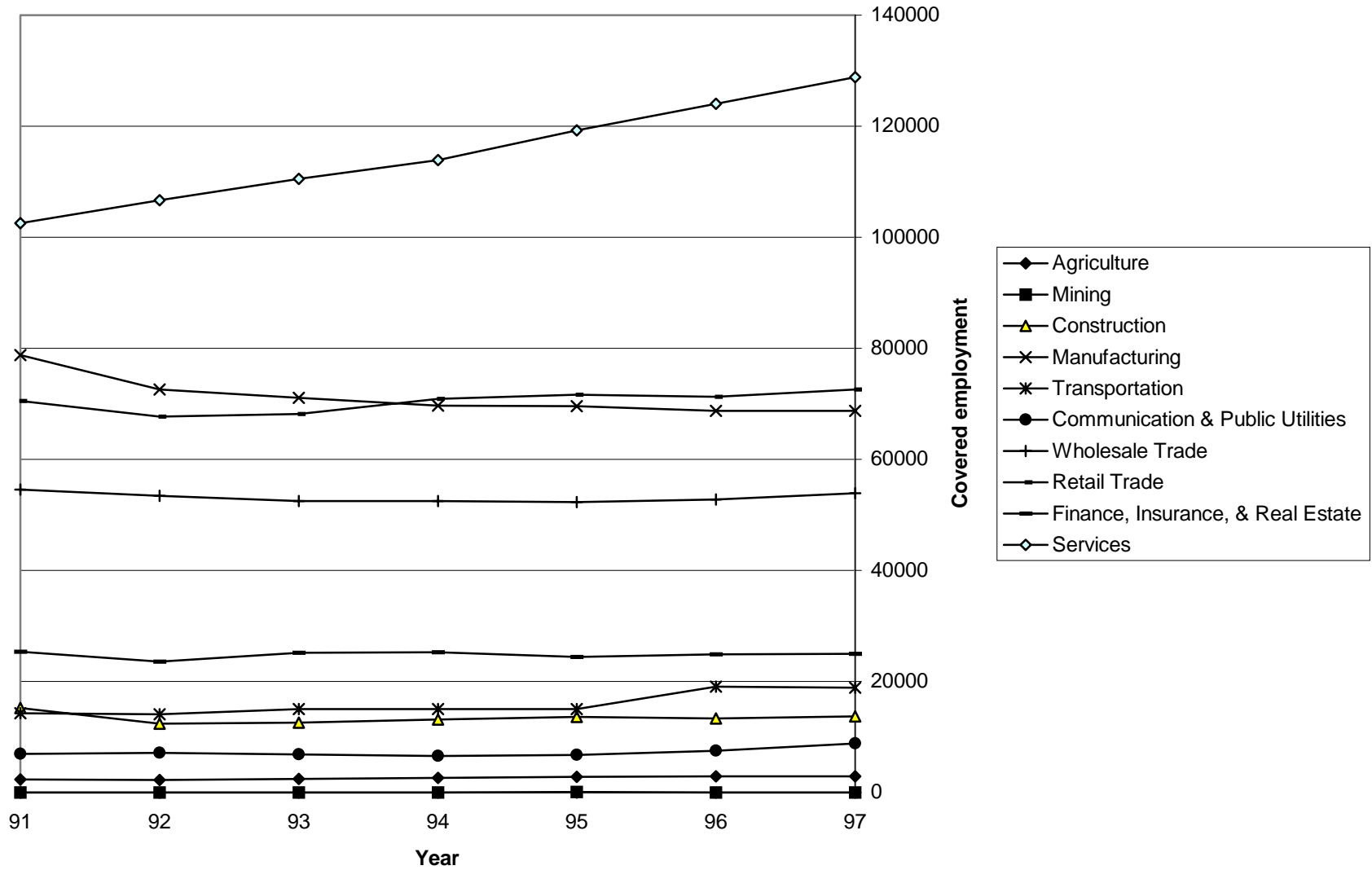


Figure 12: Private sector covered employment in the study area (1989-1997) (Morris - Warren)



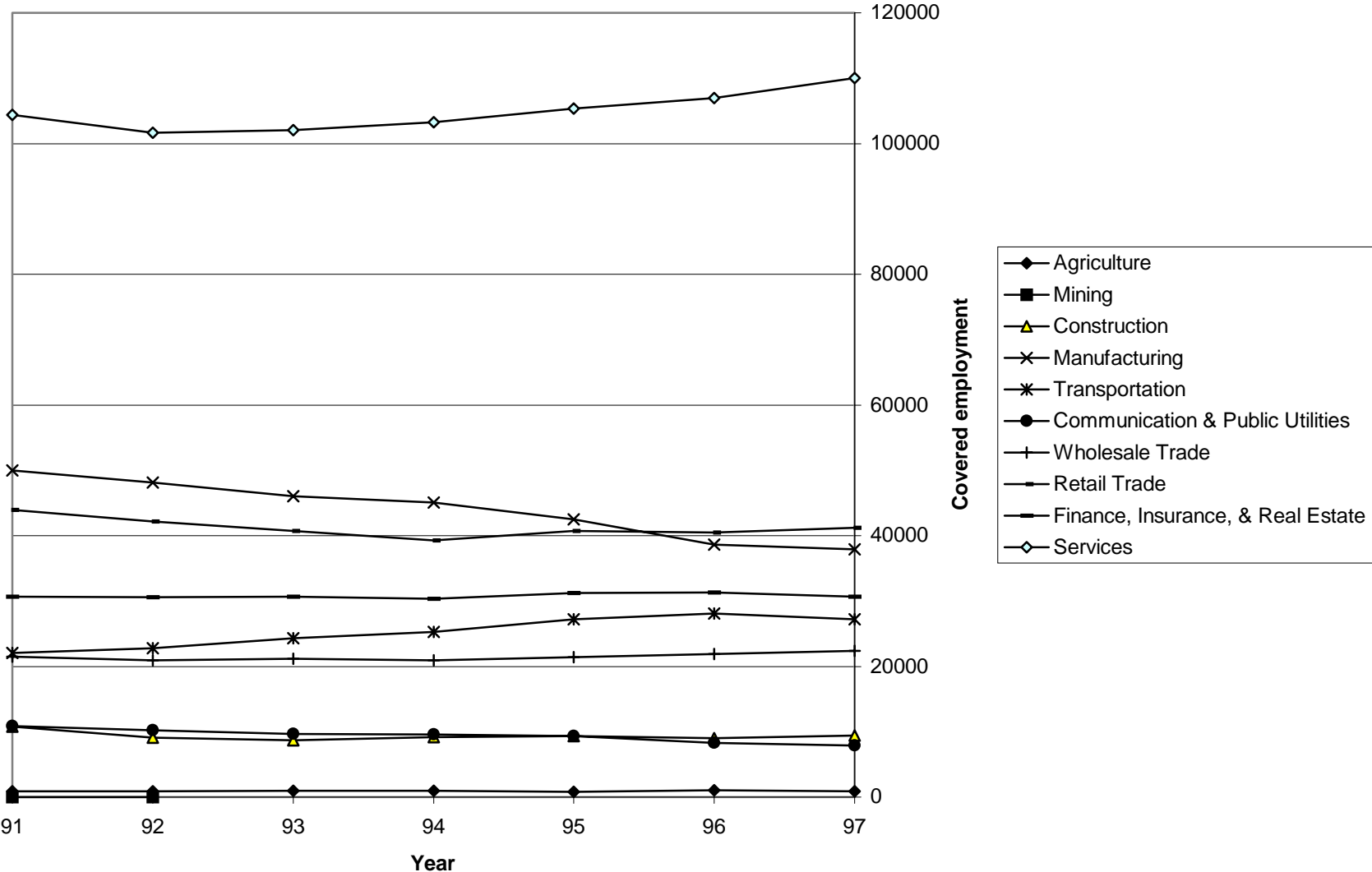
Source: New Jersey Data Center

Figure 13: Trends in Covered Employment (Bergen County)



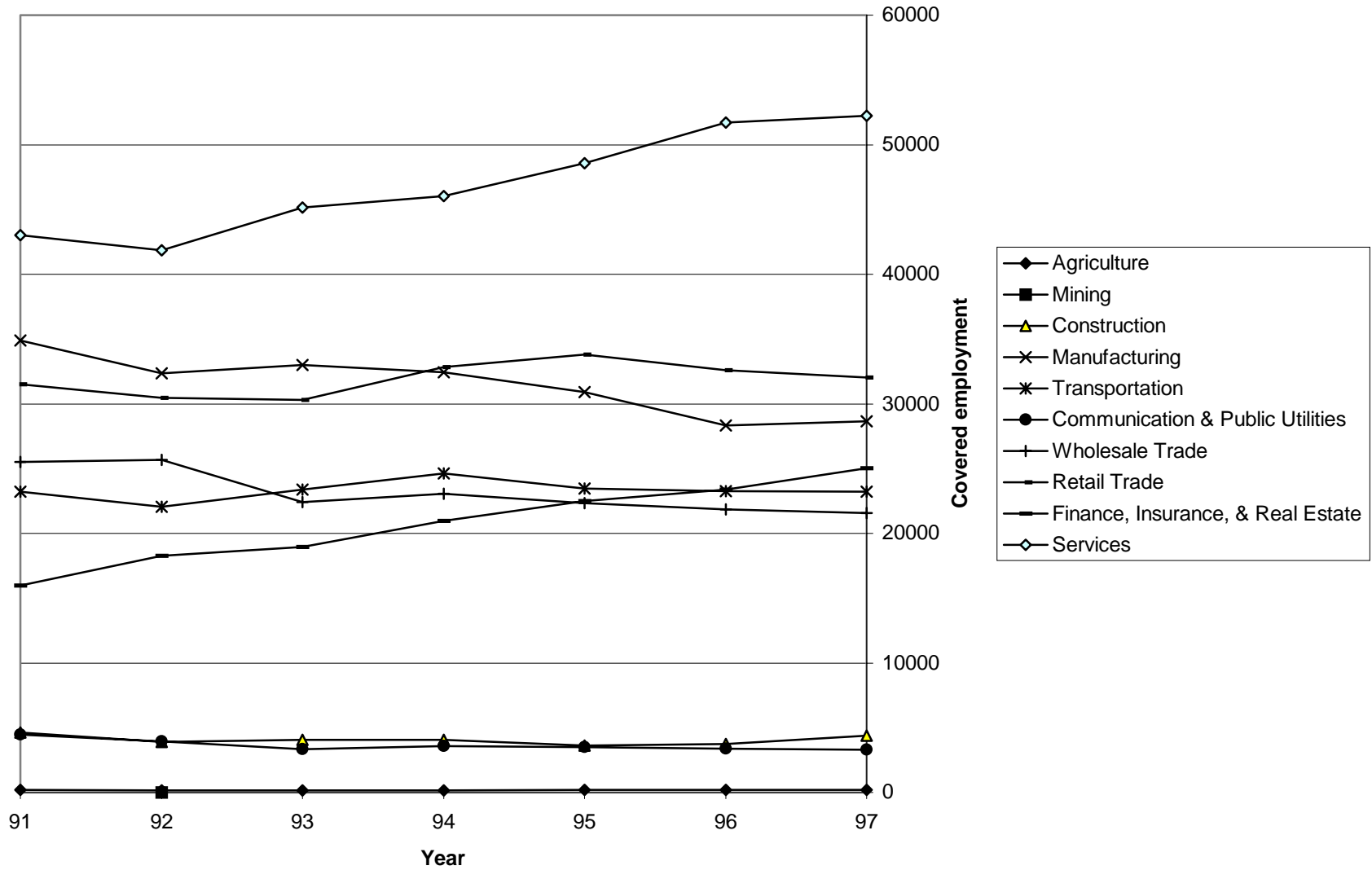
Source: New Jersey Data Center

Figure 14: Trends in covered employment (Essex county)



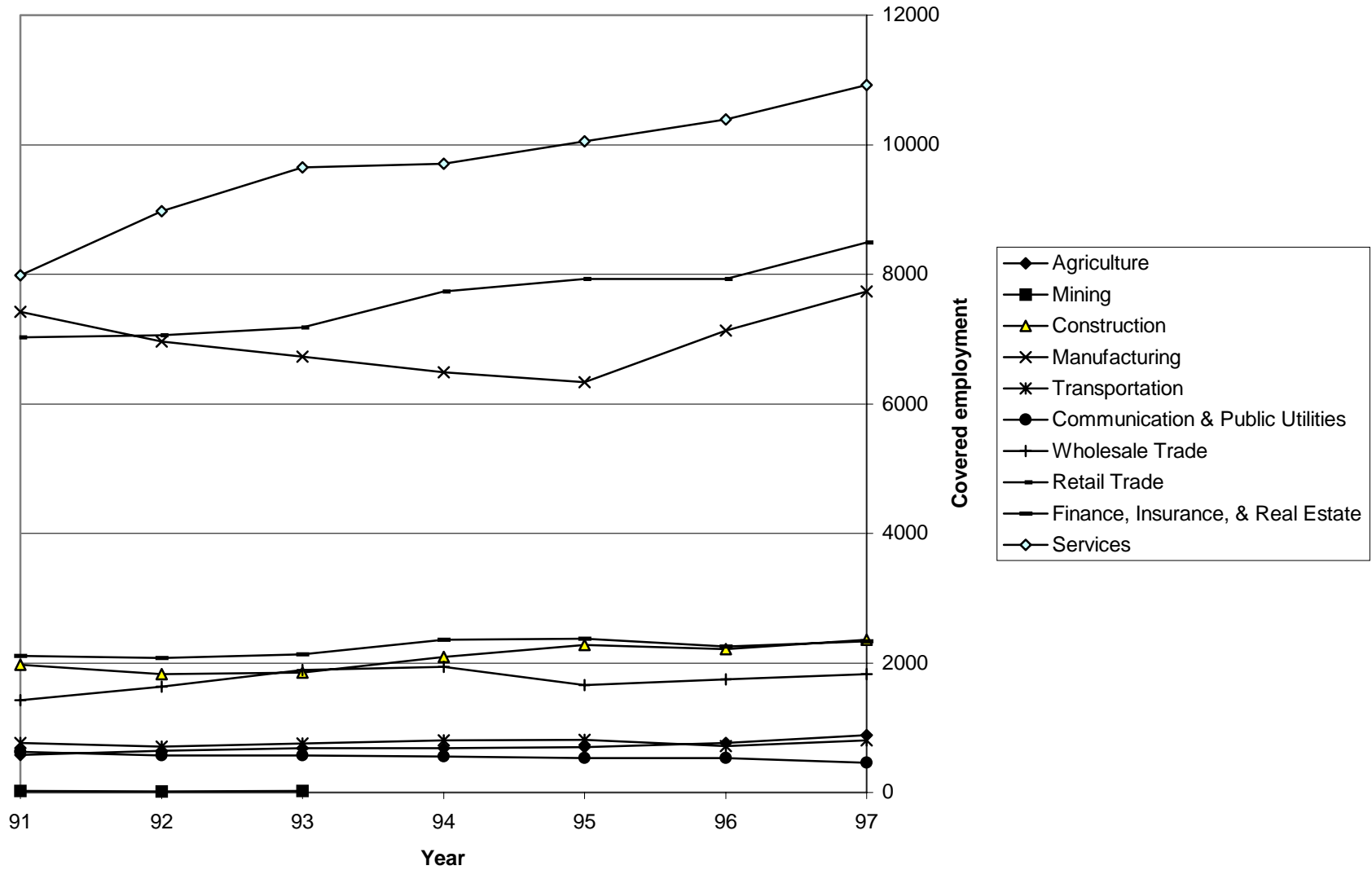
Source: New Jersey Data Center

Figure 15: Trends in covered employment (Hudson county)



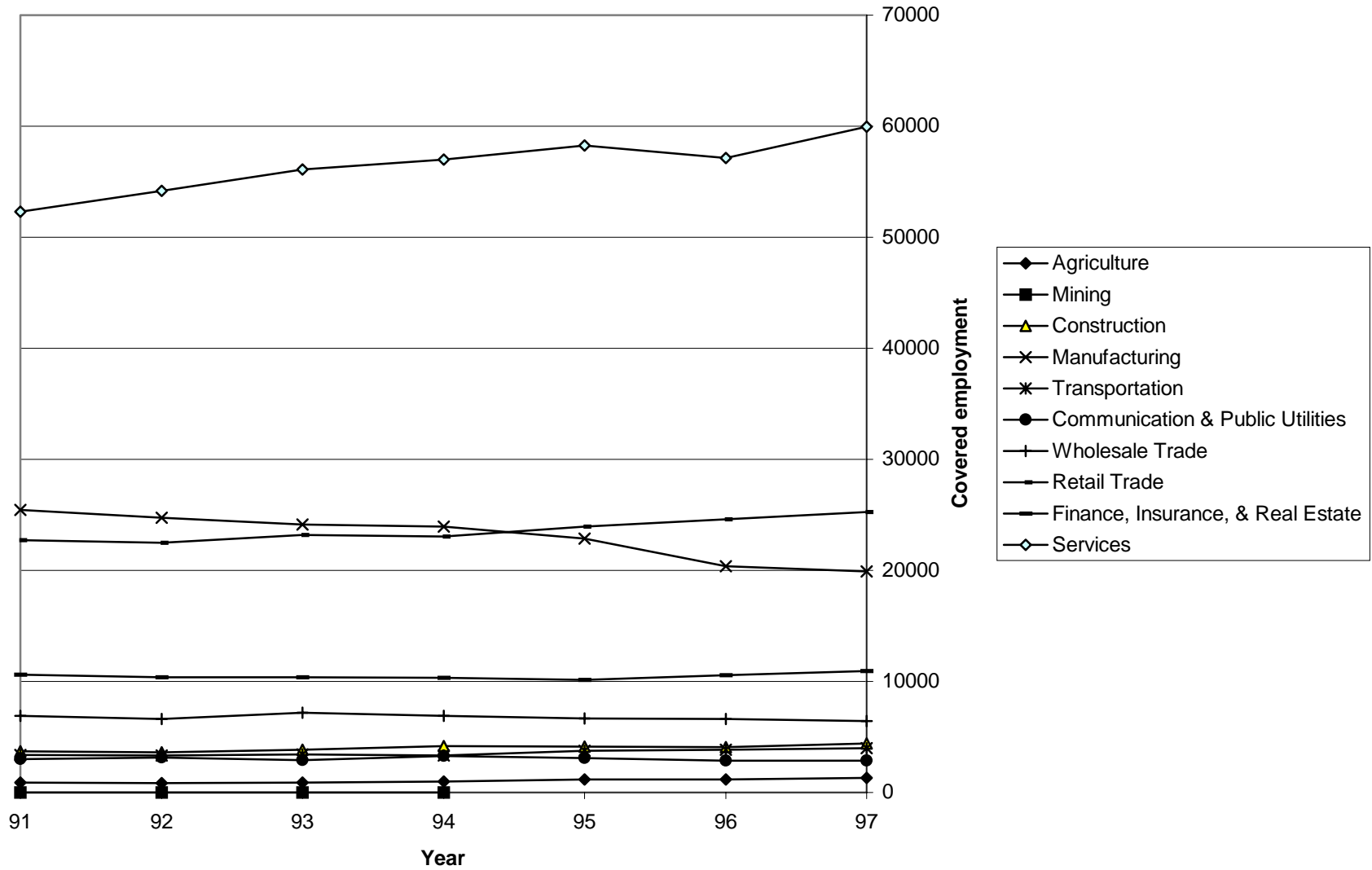
Source: New Jersey Data Center

Figure 16: Trends in covered employment (Hunterdon county)



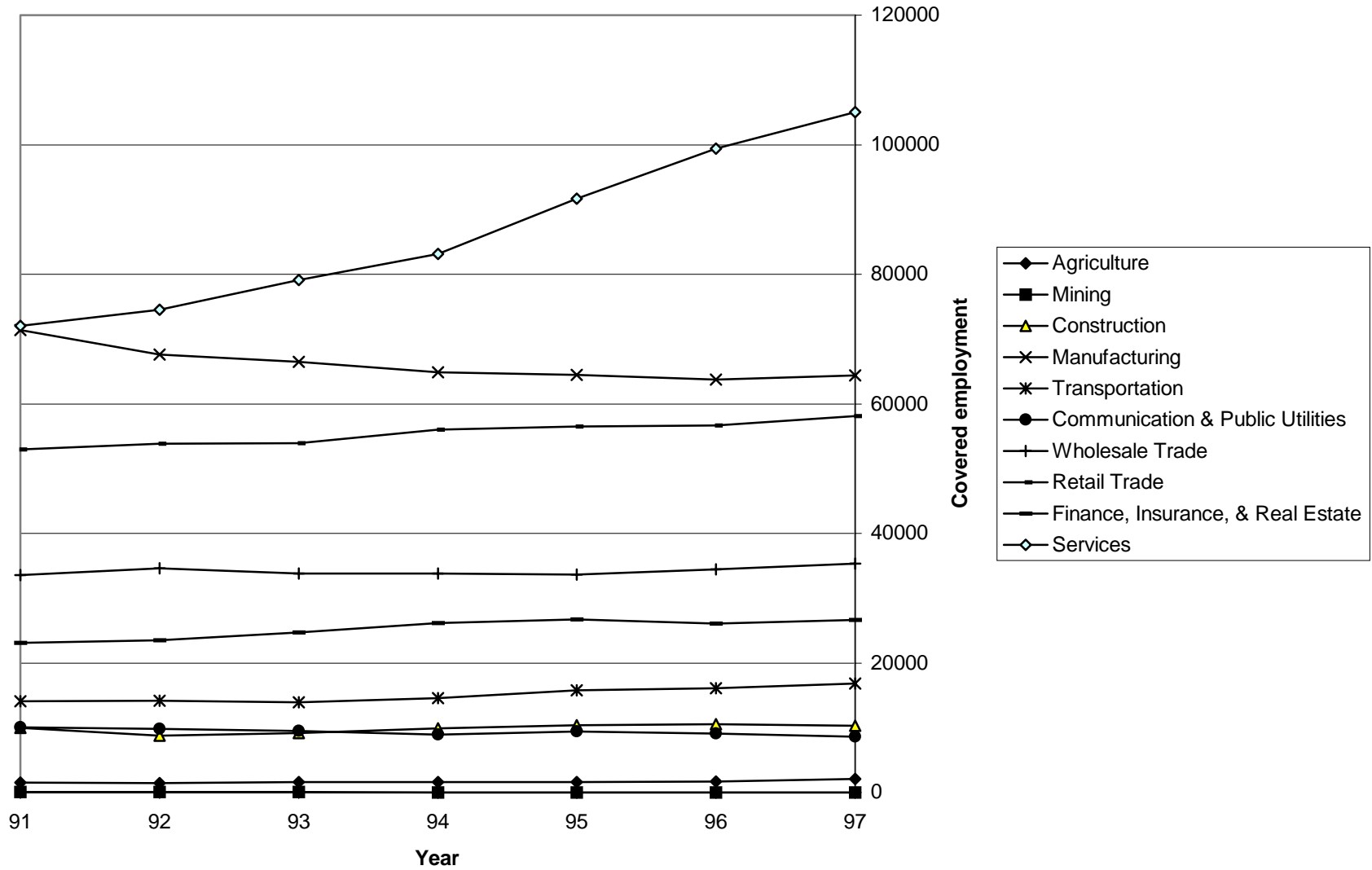
Source: New Jersey Data Center

Figure 17: Trends in covered employment (Mercer county)



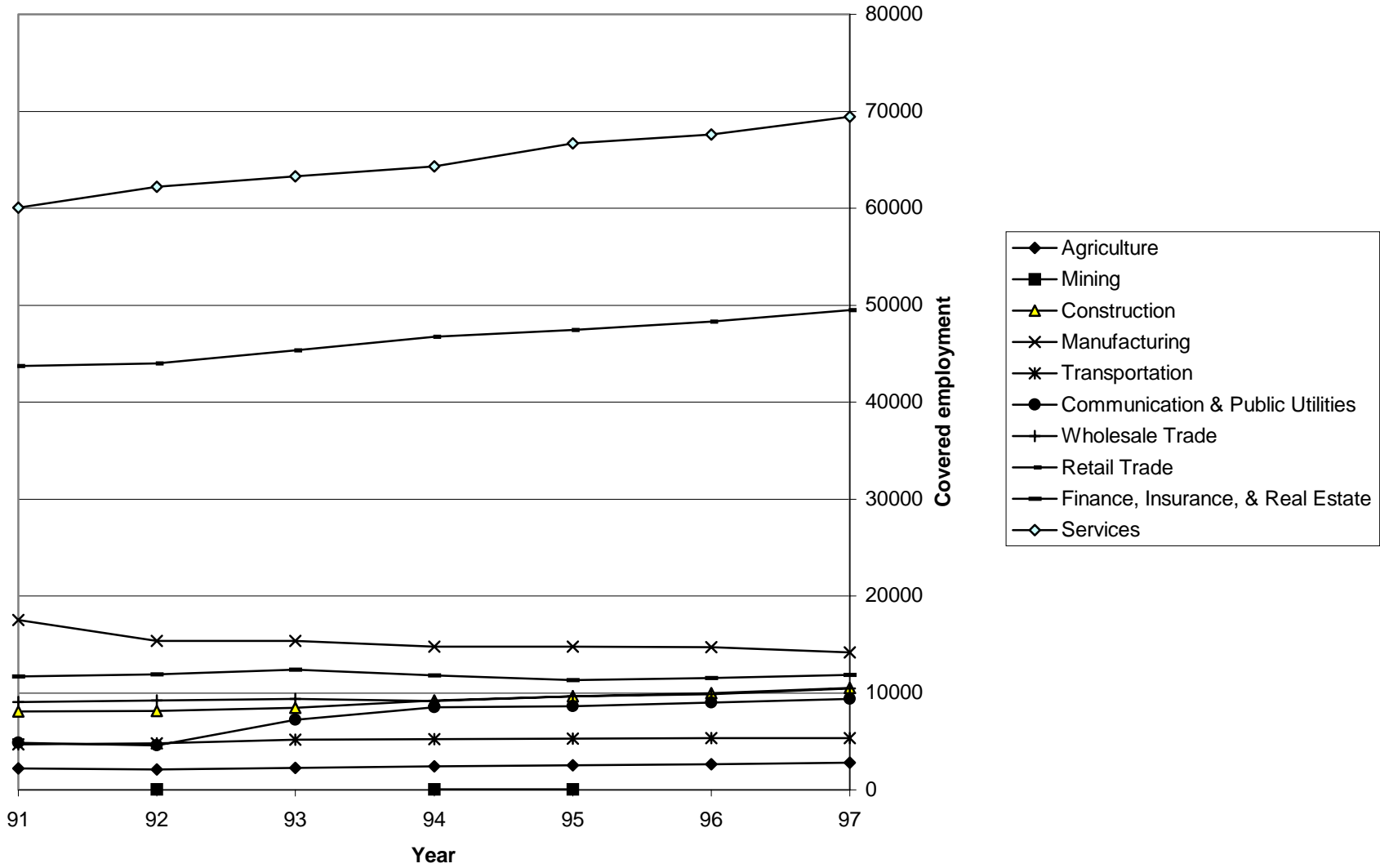
Source: New Jersey Data Center

Figure 18: Trends in covered employment (Middlesex county)



Source: New Jersey Data Center

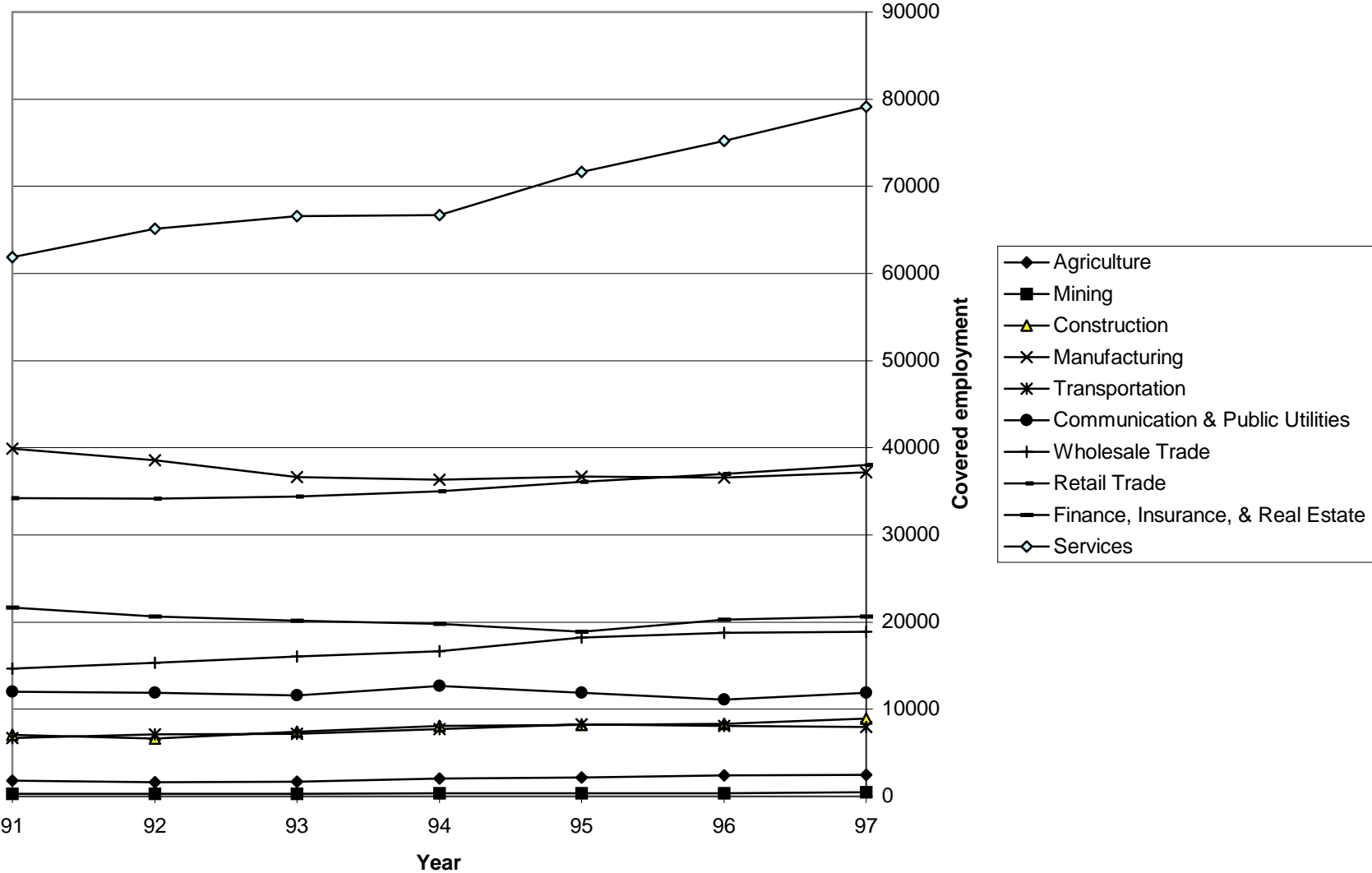
Figure 19: Trends in covered employment (Monmouth county)



Source: New Jersey Data Center

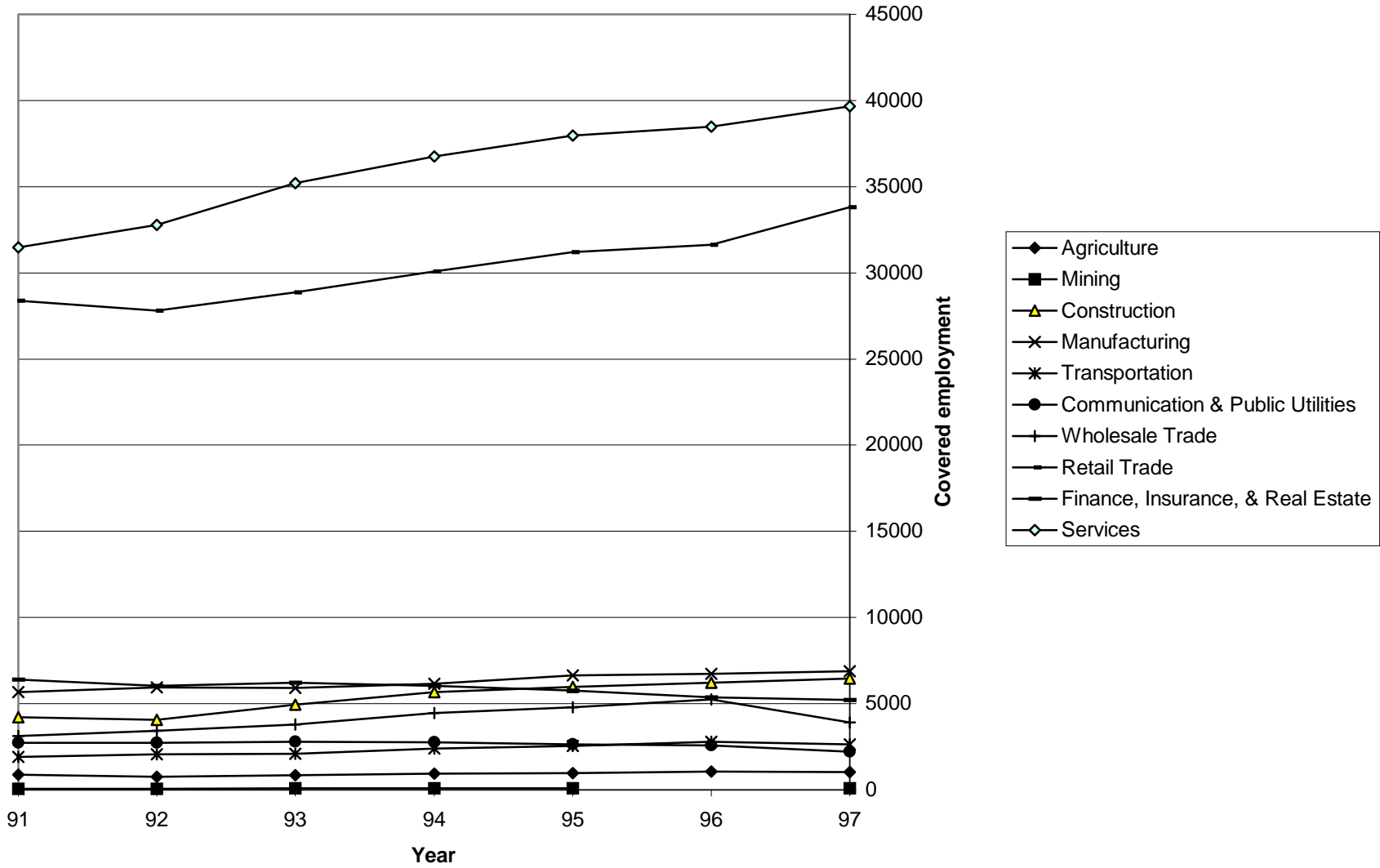


Figure 20: Trends in covered employment (Morris county)



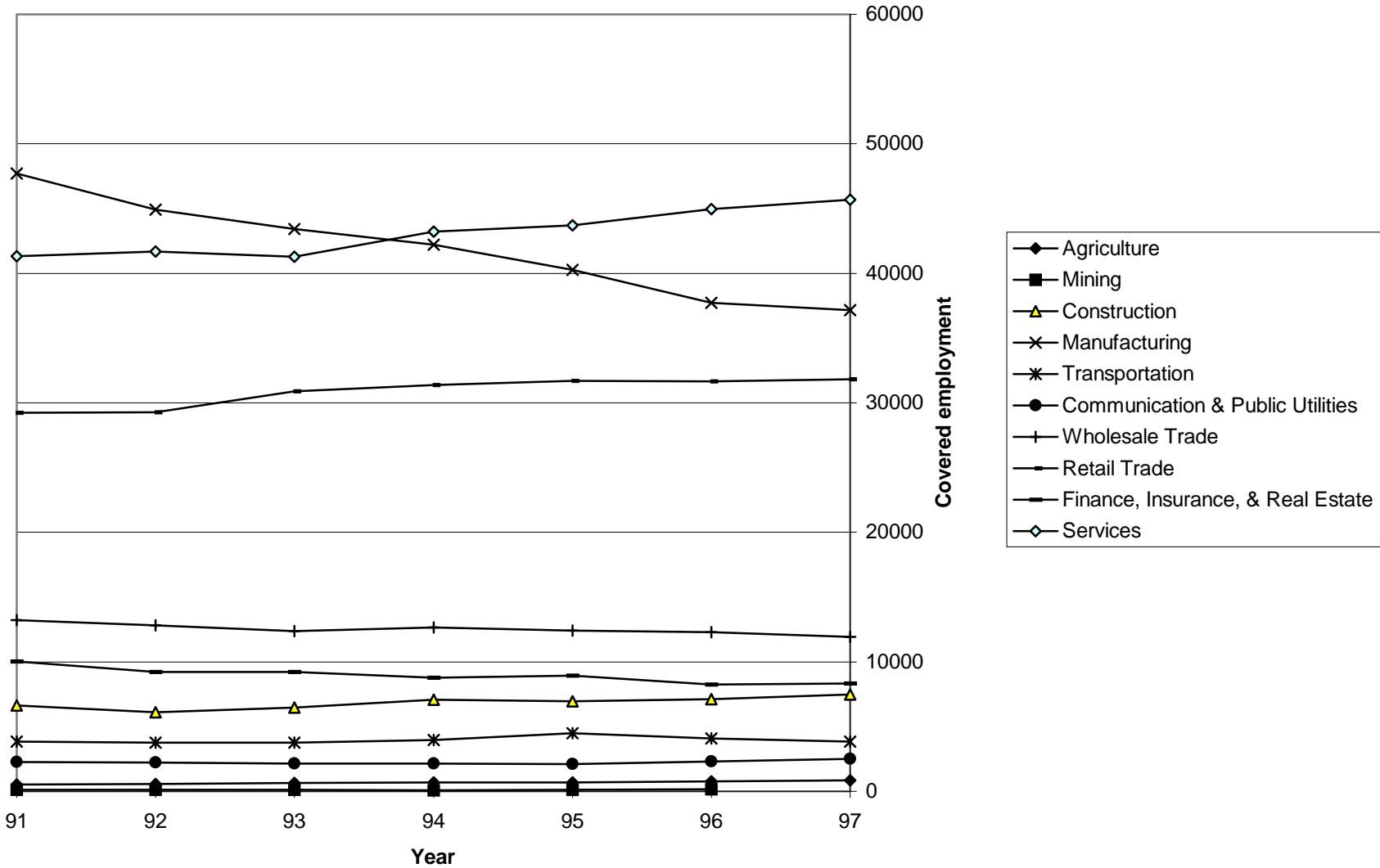
Source: New Jersey Data Center

Figure 21: Trends in covered employment (Ocean county)



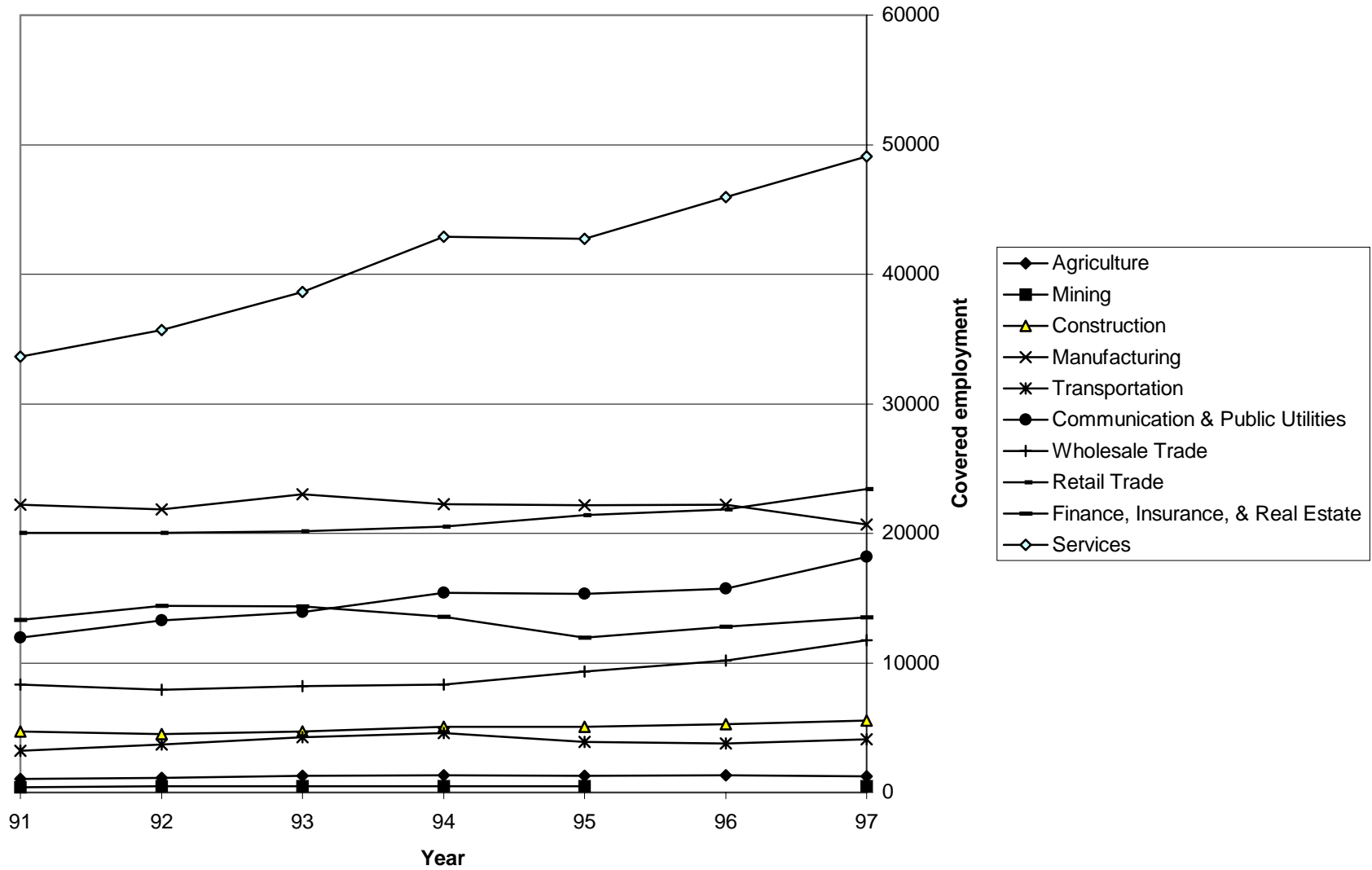
Source: New Jersey Data Center

Figure 22: Trends in covered employment (Passaic county)



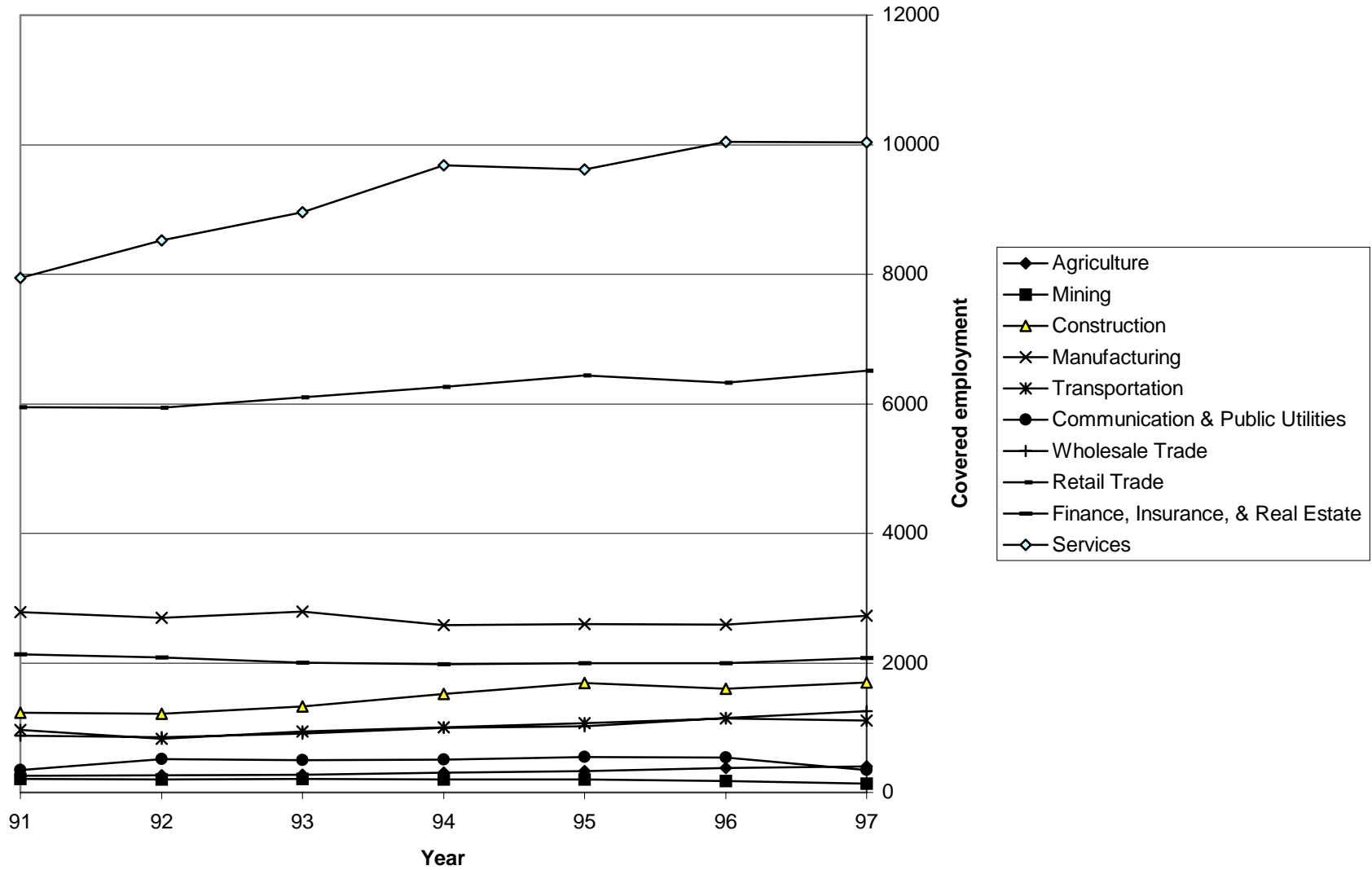
Source: New Jersey Data Center

Figure 23: Trends in covered employment (Somerset county)



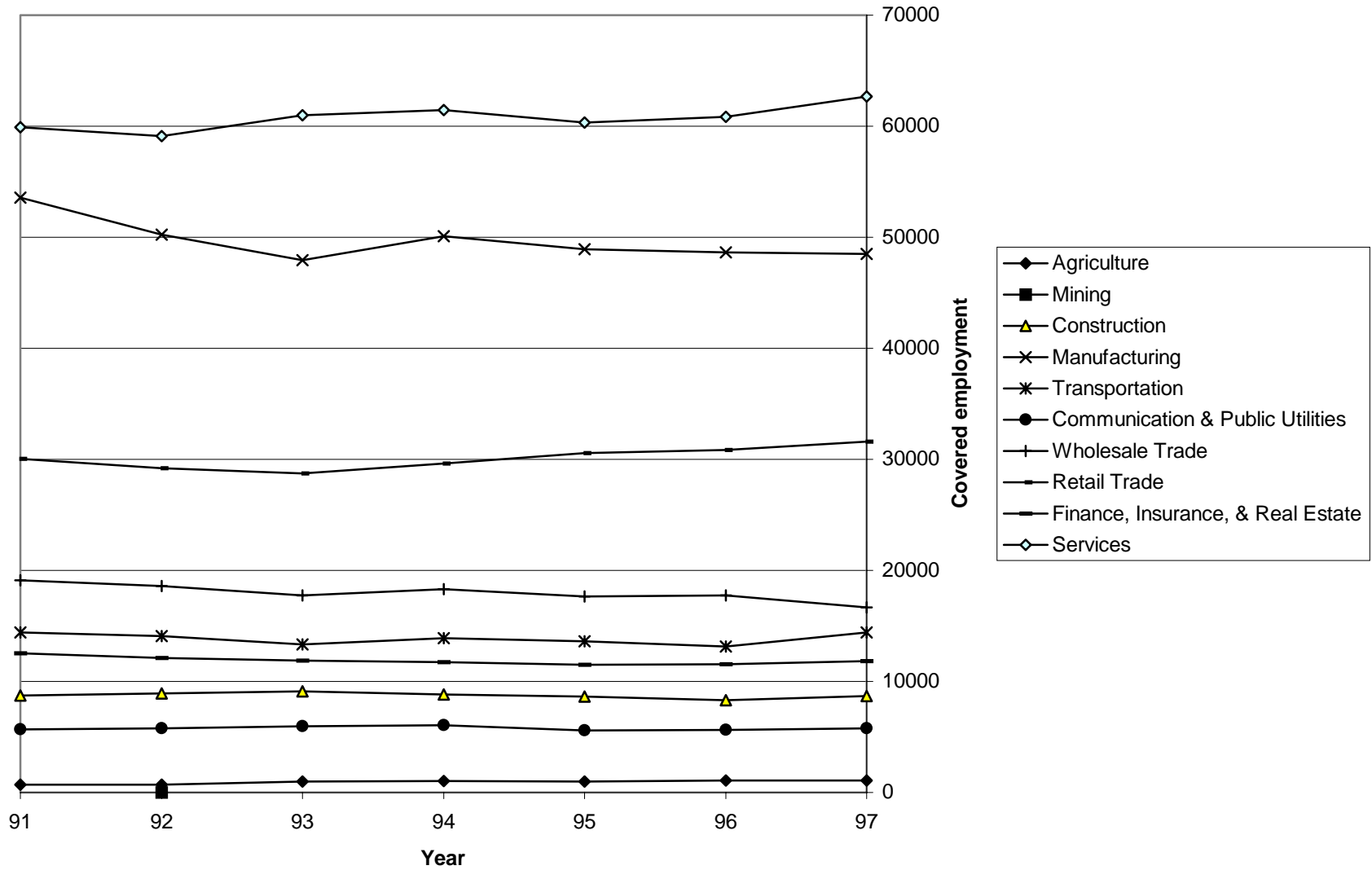
Source: New Jersey Data Center

Figure 24: Trends in covered employment (Sussex county)



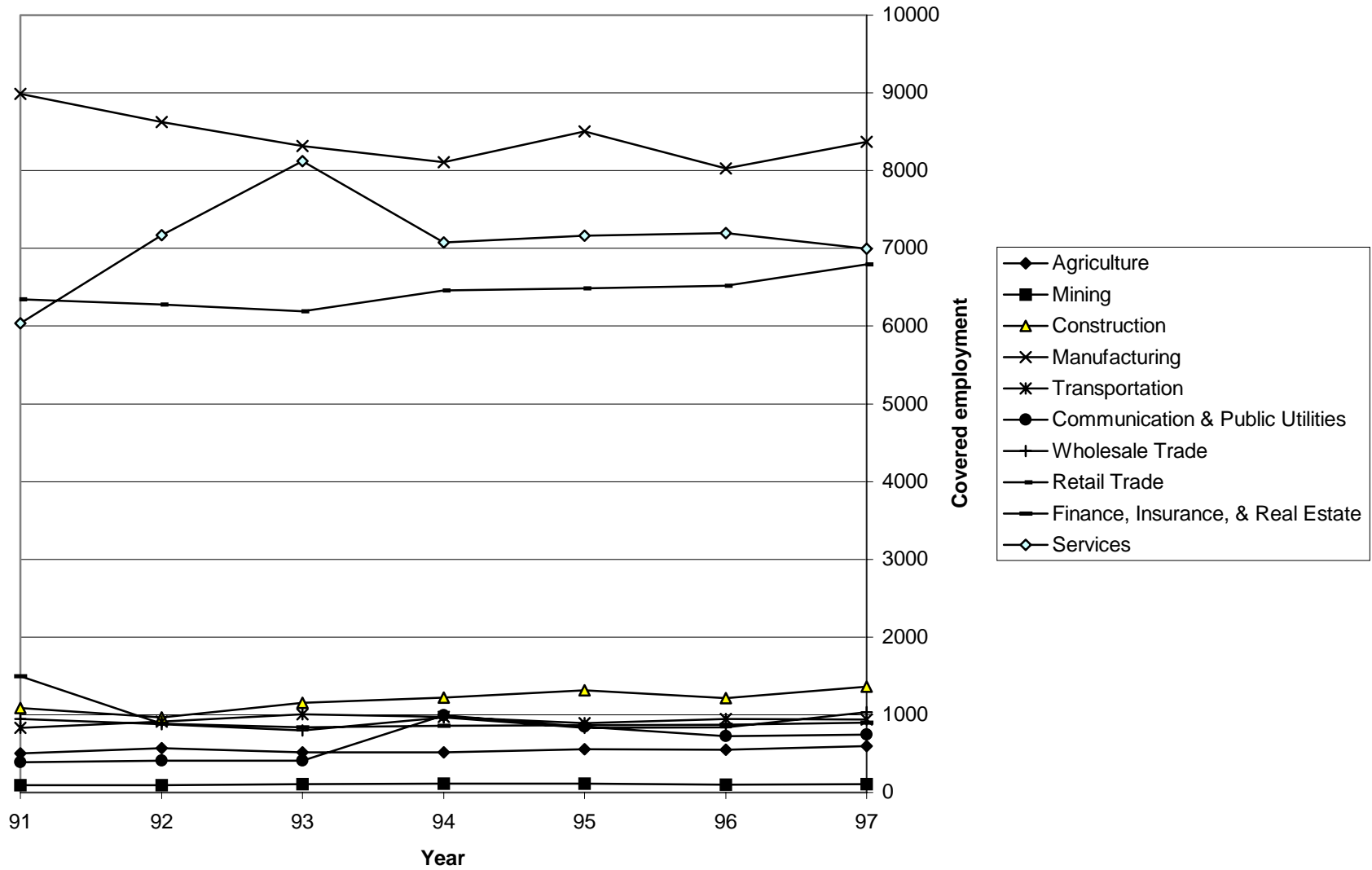
Source: New Jersey Data Center

Figure 25: Trends in covered employment (Union county)



Source: New Jersey Data Center

Figure 26: Trends in covered employment (Warren county)



Source: New Jersey Data Center