

Vision Zero



Data Track 247™
Fleet management Solutions



Custom Tailored Solutions for the Transportation Industry



Old Fashion Education & Training

Integrated with **Technology**

Delivers



Results !

G values ?







Data measurement and collection

The screenshot shows a software interface for vehicle tracking. On the left, there is a table with columns for 'Vehicle', 'Dis...', and 'Status'. The table lists several vehicles, including control groups and test groups, with their current status and duration. On the right, a map of New York City shows the locations of these vehicles as red and green icons. The interface includes a top navigation bar with buttons for 'Dispatch', 'Dashboard', 'Reports', 'Data', and 'Alerts', and a search bar.

Vehicle	Dis...	Status
Control-Group#1(E)		Stopped 2.4 hrs
Control-Group#1(j)		Idling 5.0 mins
Control-Group#1-(D)		Stopped 23.0 mi
Control-Group(G)		Offline 5.4 days
Test-Group(G-1)		Stopped 1.5 day
Test-Group-Sedan(LL)		Stopped 2.8 day
Test-Group-Sedan(Scot)		Stopped 2.0 day
Test-Group-stretch limo(LL)		Moving 26.8 mir

Control group V.S. Test group - Data Analysis

Raw G Data collection & analysis

	Vehicles	Date	Type	Latitude	Longitude	Address	Acceleration
	Control-G-MINIVAN#1-(D)	10/1/15 15:51	Hard Right	40.7567523	-73.9345881	37-09 Crescent St, Queens, NY	0.21
	Control-G-MINIVAN#1-(D)	10/7/15 1:44	Hard Acceleration	40.7550131	-73.8938013	32-47-32-49 73rd St, Queens, N	0.17
	Control-G-MINIVAN#1-(D)	10/7/15 13:43	Hard Left	40.7581336	-73.9997931	558-598 W 38th St, Manhattan	0.26
	Control-G-MINIVAN#1-(D)	10/7/15 16:46	Hard Braking	40.7439385	-73.9263271	38-2-38-98 NY-25, Queens, NY	0.28
	Test-G-MINIVAN(LL)	11/19/15 16:38	Hard Acceleration	40.7227811	-73.936423	105 Lombardy St, Brooklyn, NY	0.22
	Test-G-MINIVAN(LL)	11/19/15 16:52	Hard Right	40.710339	-73.9583321	Borinquen Pl, Brooklyn, NY	0.31
	Test-G-MINIVAN(LL)	11/19/15 16:54	Hard Braking	40.7166376	-73.9816188	65 Williamsburg Bridge, Manha	0.29
	Test-G-MINIVAN(LL)	11/19/15 17:21	Hard Left	40.768505	-73.9050745	3590 Astoria Blvd N, Queens, N	0.26
	Control-G-LIMO#1	11/18/15 19:50	Hard Acceleration	40.8645146	-74.7661371	360-372 Sand Shore Rd, Mt Oli	0.17
	Control-G-LIMO#1	11/16/15 16:52	Hard Left	40.743636	-73.8395373	Meridian Rd, Queens, NY	0.26
	Control-G-LIMO#1	11/16/15 16:57	Hard Braking	40.734419	-73.8728435	89-53 Queens Blvd, Queens, N'	0.27
	Control-G-LIMO#1	11/14/15 17:12	Hard Right	41.2517358	-74.4878088	1801-1835 County Rd 565, Gle	0.29
	Test-G-LIMO#1	11/12/15 18:20	Hard Right	40.7339546	-73.8668588	Horace Harding Expy, Queens,	0.27
	Test-G-LIMO#1	11/12/15 21:07	Hard Acceleration	40.7399731	-73.8956796	69-0-69-20 Queens Blvd, Quee	0.21
	Test-G-LIMO#1	11/13/15 16:46	Hard Braking	40.7440503	-73.92507	40 Queens Blvd, Queens, NY	0.27
	Test-G-LIMO#1	11/14/15 17:12	Hard Left	41.250669	-74.4901605	1836 County Rd 565, Glenwooc	0.28
	Control-G- SUV	11/8/15 21:35	Hard Acceleration	40.6726701	-73.9987898	381-435 Hamilton Ave, Brookly	0.15
	Control-G- SUV	11/8/15 21:35	Hard Right	40.6731738	-73.9985011	551 Smith St, Brooklyn, NY	0.16
	Control-G- SUV	11/8/15 21:40	Hard Braking	40.6360125	-73.97264	507 Ocean Pkwy, Brooklyn, NY	0.29
	Test-G-SUV(G-1)	11/14/15 17:11	Hard Left	41.240763	-74.5075805	1765-1771 County Rd 565, Sus:	0.3
	Test-G-SUV(G-1)	11/14/15 17:11	Hard Acceleration	41.2414648	-74.5067931	1765-1771 County Rd 565, Sus:	0.16
	Test-G-SUV(G-1)	11/14/15 17:12	Hard Right	41.2517358	-74.4878088	1801-1835 County Rd 565, Gle	0.29
	Test-G-SEDAN	11/14/15 16:50	Hard Braking	40.6360125	-73.97264	507 Ocean Pkwy, Brooklyn, NY	0.29
	Test-G-SEDAN	11/14/15 16:52	Hard Acceleration	40.6362476	-73.9726635	499 Ocean Pkwy, Brooklyn, NY	0.17
	Test-G-SEDAN	11/14/15 16:57	Hard Left	40.6447836	-73.9743196	207 Ocean Pkwy, Brooklyn, NY	0.27
	Test-G-SEDAN	11/14/15 17:12	Hard Right	40.6451068	-73.9743911	NY-27, Brooklyn, NY	0.18
	Control-G-SEDAN#1(J)	11/17/15 2:01	Hard Left	40.69349	-73.8241098	93-41 123rd St, Queens, NY	0.21
	Control-G-SEDAN#1(J)	11/17/15 2:04	Hard Braking	40.6960265	-73.8190028	93-2 130th St, Queens, NY	0.25
	Control-G-SEDAN#1(J)	11/17/15 2:07	Hard Right	40.6921591	-73.823557	97-05 123rd St, Queens, NY	0.29
	Control-G-SEDAN#1(J)	11/17/15 2:09	Hard Acceleration	40.7415426	-73.874885	90-02 Corona Ave, Queens, NY	0.16

Brooklyn Queens Bronx Staten Island & NYC Collection & Analysis

	A	B	C	D	E	F	G	H
015	Test-Group-Sedan(Scot)	11/12/2015 17:00	Hard Acceleration	40.7403	-73.895767	69-0-69-20 Queens Blvd, Queens, NY	0.16	264.9 mi
016	Test-Group-Sedan(Scot)	11/12/2015 17:04	Hard Acceleration	40.74156	-73.906277	59-0-59-20 Queens Blvd, Queens, NY	0.17	265.6 mi
017	Test-Group-Sedan(Scot)	11/12/2015 17:05	Hard Acceleration	40.74146	-73.9047883	59-22-59-30 NY-25, Queens, NY	0.16	265.6 mi
018	Test-Group-Sedan(Scot)	11/12/2015 17:10	Hard Acceleration	40.73926	-73.8976653	46-14 67th St, Queens, NY	0.16	266.2 mi
019	Test-Group-Sedan(Scot)	11/12/2015 17:11	Hard Acceleration	40.73837	-73.8970791	67-15 48th Ave, Queens, NY	0.19	266.2 mi
020	Test-Group-Sedan(Scot)	11/12/2015 17:11	Hard Acceleration	40.73834	-73.8957093	69-11C 48th Ave, Queens, NY	0.16	266.2 mi
021	Test-Group-Sedan(Scot)	11/13/2015 18:11	Hard Acceleration	40.73969	-73.8941873	46-1-46-3 70th St, Queens, NY	0.16	266.5 mi
022	Test-Group-Sedan(Scot)	11/13/2015 18:12	Hard Acceleration	40.74032	-73.8878163	76-9-76-11 46th Ave, Queens, NY	0.17	266.8 mi
023	Test-Group-Sedan(Scot)	11/13/2015 18:13	Hard Acceleration	40.74038	-73.8873626	76-23 46th Ave, Queens, NY	0.17	266.9 mi
024	Test-Group-Sedan(Scot)	11/13/2015 18:19	Hard Acceleration	40.7403	-73.8885266	45-20 76th St, Queens, NY	0.16	266.9 mi
025	Test-Group-Sedan(Scot)	11/13/2015 18:22	Hard Acceleration	40.74031	-73.8959383	69-0-69-20 Queens Blvd, Queens, NY	0.17	267.2 mi
026	Test-Group-Sedan(Scot)	11/13/2015 18:23	Hard Acceleration	40.74125	-73.9022093	63-0-63-98 NY-25, Queens, NY	0.16	267.3 mi
027	Test-Group-Sedan(Scot)	11/13/2015 18:23	Hard Braking	40.74209	-73.9090738	56-0-56-98 NY-25, Queens, NY	0.27	267.5 mi
028	Test-Group-Sedan(Scot)	11/13/2015 18:24	Hard Acceleration	40.74213	-73.909471	56-0-56-98 Queens Blvd, Queens, NY	0.17	267.5 mi
029	Test-Group-Sedan(Scot)	11/13/2015 18:26	Hard Acceleration	40.74252	-73.9131498	51-2-51-98 NY-25, Queens, NY	0.18	267.8 mi
030	Test-Group-Sedan(Scot)	11/13/2015 18:53	Hard Acceleration	40.74154	-73.9059378	59-0-59-20 Queens Blvd, Queens, NY	0.16	268.7 mi
031	Test-Group-Sedan(Scot)	11/13/2015 18:55	Hard Acceleration	40.74131	-73.9044158	60-1-60-99 NY-25, Queens, NY	0.18	268.9 mi
032	Test-Group-Sedan(Scot)	11/13/2015 19:25	Hard Acceleration	40.7394	-73.8998383	65-24-65-28 Laurel Hill Blvd, Queens, NY	0.16	269.3 mi
033	Test-Group-Sedan(Scot)	11/13/2015 19:26	Hard Acceleration	40.73696	-73.8995186	65-30-65-98 50th Ave, Queens, NY	0.17	269.4 mi
034	Test-Group-Sedan(Scot)	11/13/2015 19:26	Hard Acceleration	40.73693	-73.8974266	67-4-67-8 50th Ave, Queens, NY	0.16	269.5 mi
035	Test-Group-Sedan(Scot)	11/14/2015 14:28	Hard Acceleration	40.73836	-73.8944895	48-8 70th St, Queens, NY	0.19	269.7 mi
036	Test-Group-Sedan(Scot)	11/14/2015 14:29	Hard Acceleration	40.74009	-73.8947195	69-23 Queens Blvd, Queens, NY	0.19	269.9 mi
037	Test-Group-Sedan(Scot)	11/14/2015 14:30	Hard Acceleration	40.74026	-73.8956936	69-0-69-20 Queens Blvd, Queens, NY	0.18	269.9 mi
038	Test-Group-Sedan(Scot)	11/14/2015 14:42	Hard Acceleration	40.74118	-73.9034263	60-24 Queens Blvd, Queens, NY	0.18	270.8 mi
039	Test-Group-Sedan(Scot)	11/14/2015 14:45	Hard Acceleration	40.73831	-73.897147	67-15 48th Ave, Queens, NY	0.19	271.2 mi
040	Test-Group-Sedan(Scot)	11/14/2015 14:46	Hard Acceleration	40.73831	-73.8950133	69-20-69-98 48th Ave, Queens, NY	0.19	271.2 mi
041	Control-Group#1(E)	11/12/2015 18:20	Hard Right	40.73395	-73.8668588	Horace Harding Expy, Queens, NY	0.27	6.4 mi
042	Control-Group#1(E)	11/12/2015 21:07	Hard Acceleration	40.73997	-73.8956796	69-0-69-20 Queens Blvd, Queens, NY	0.21	16.8 mi
043	Control-Group#1(E)	11/13/2015 16:46	Hard Braking	40.74405	-73.92507	40 Queens Blvd, Queens, NY	0.27	28.3 mi
044	Control-Group#1(E)	11/13/2015 18:05	Hard Acceleration	40.76981	-73.9166361	32-14 Astoria Blvd, Queens, NY	0.2	31.6 mi
045	Control-Group#1(E)	11/13/2015 20:23	Hard Acceleration	40.73299	-73.8669941	LIE, Queens, NY	0.21	36.5 mi
046	Control-Group#1(E)	11/14/2015 15:35	Hard Acceleration	40.73033	-73.8335481	136th St, Queens, NY	0.23	39.9 mi
047	Control-Group#1(E)	11/14/2015 15:38	Hard Acceleration	40.74295	-73.8370726	Van Wyck Expy, Queens, NY	0.21	40.7 mi
048	Control-Group#1(E)	11/14/2015 17:03	Hard Acceleration	40.7519	-73.8359728	49-1-49-99 131st St, Queens, NY	0.2	41.7 mi
049	Control-Group#1(E)	11/14/2015 18:37	Hard Right	40.76329	-73.8390423	Flushing Bay Promenade, Queens, NY	0.26	45.7 mi
050	Control-Group#1(E)	11/14/2015 18:37	Hard Left	40.76353	-73.8402543	Whitestone Expressway, Queens, NY	0.27	45.7 mi
051	Control-Group#1(E)	11/14/2015 18:37	Hard Left	40.76272	-73.8400008	Northern Blvd, Queens, NY	0.27	45.7 mi
052	Control-Group#1(E)	11/14/2015 23:32	Hard Acceleration	40.70149	-73.8688823	Forest Park Dr, Queens, NY	0.22	52.8 mi
053	Control-Group#1(E)	11/14/2015 23:38	Hard Acceleration	40.69716	-73.8563663	89-0-89-20 Park Ln S, Queens, NY	0.21	54.0 mi
054	Control-Group#1(E)	11/14/2015 23:39	Hard Braking	40.70239	-73.855091	90-01 Myrtle Ave, Queens, NY	0.26	54.5 mi
055	Control-Group#1(E)	11/14/2015 23:41	Hard Acceleration	40.70279	-73.8551841	90-01 Myrtle Ave, Queens, NY	0.22	54.5 mi
056	Control-Group#1(E)	11/15/2015 4:37	Hard Braking	40.68586	-73.8468565	97-09 Woodhaven Blvd, Queens, NY	0.27	82.2 mi
057	Control-Group#1(E)	11/15/2015 4:38	Hard Acceleration	40.68614	-73.8470665	95-31 Woodhaven Blvd, Queens, NY	0.22	82.2 mi
058	Control-Group#1(E)	11/15/2015 4:40	Hard Braking	40.69742	-73.8526673	84-14 Woodhaven Blvd, Queens, NY	0.26	83.1 mi
059	Control-Group#1(E)	11/15/2015 4:43	Hard Braking	40.69452	-73.8647878	85-40-85-44 Forest Blvd, Queens, NY	0.26	83.6 mi

53798853-149f-49d8-b4e4-555b44d

**Determining the key parameters
that would impact “Driver Behavior”
is crucial to the success of the
Vision Zero initiative**

- 24/7 live monitoring of fleets (with driver performance)
- Before and after Analysis

TLC Pilot – car service fleet

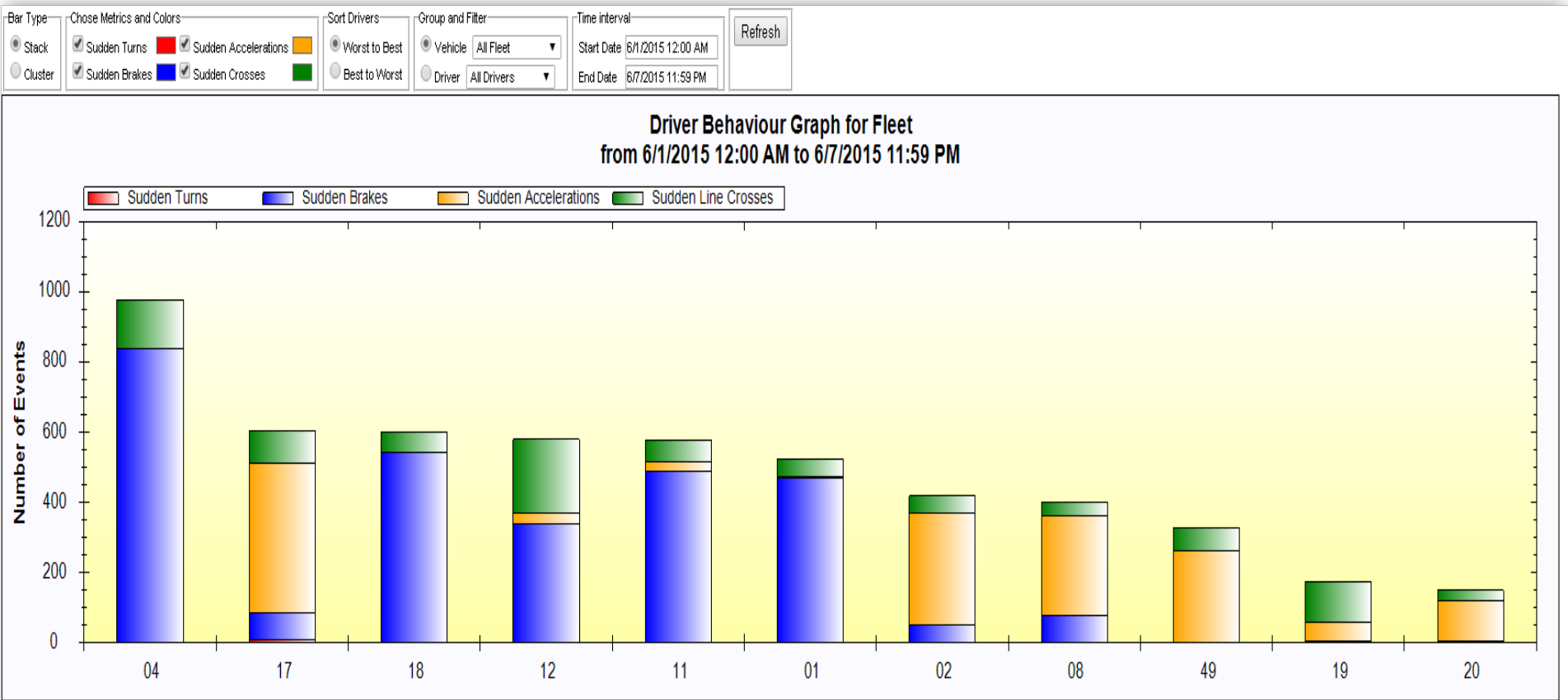


Vehicle	Driver	Speed	Dir.	Last GPS Time	Last Address	Status	Idle, min	Battery Level, %
17	EDDIE KING	0.00		11/16/2015 10:06 AM	3439 Bainbridge Ave Bronx NY 10467	Slow Moving at Speed: 0.00 Dir:		13.7
19	MAURICE RAWLINGS	55.62	SW	11/16/2015 10:06 AM	Whitestone Expy Whitestone NY 11357	Moving at Speed: 55.62 Dir: SW		13.9
08	EDDIE KING	26.48	SE	11/16/2015 10:06 AM	2267 Eastchester Rd Bronx NY 10469	Slow Moving at Speed: 26.48 Dir: SE		13.9
18	DONALD HENDERSON	0.00		11/16/2015 10:05 AM	3966 Gouverneur Ave Bronx NY 10463	Short Standing: 5 Min(s)		13.4
12	ANDREW COSTANZO	18.88	SW	11/16/2015 10:05 AM	3059 Bailey Ave Bronx NY 10463	Slow Moving at Speed: 18.88 Dir: SW		13.9
16	VALRICK ROBERTS	2.18	NE	11/16/2015 10:05 AM	4390 Bronx Blvd Bronx NY 10466	Slow Moving at Speed: 2.18 Dir: NE		13.1
11	JUAN DIAZ	0.00		11/16/2015 10:04 AM	1768 Story Ave Bronx NY 10473	Short Standing: 8 Min(s)		12.6
04	ROBERT DEAS	20.49	SW	11/16/2015 10:04 AM	698 Allerton Ave Bronx NY 10467	Slow Moving at Speed: 20.49 Dir: SW		13.4
49		0.00		11/16/2015 9:58 AM	3644 Kingsbridge Ave Bronx NY 10463	Long Standing: 33 Min(s)		12.5
02	MICHAEL MITCHELL	0.00		11/16/2015 9:49 AM	740 Cranford Ave Bronx NY 10470	Long Standing: 2 Day(s) 14 Hour(s) 43 Min(s)	17	13.5

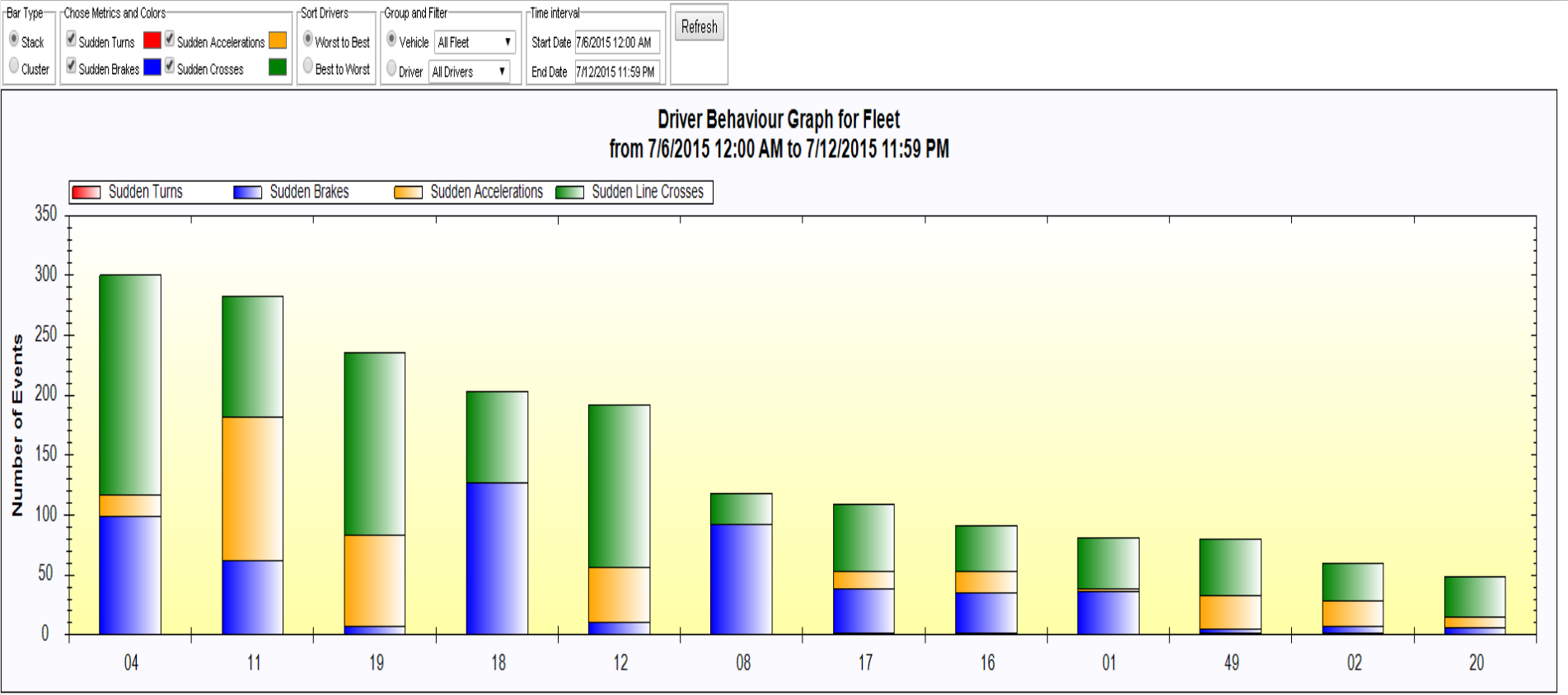
Driver Behavior

1st Week (prior to education)

Summary & Analysis



Driver Behavior 5th Week Summary & Analysis



Tailored Solutions



One “SUITE”
does **NOT FIT ALL**

How do we Interpret the True G Violations thresholds when

G = **Mass**, Distance & Speed ?



Car Service

Fleet Monitoring Driver Behavior Dashboard



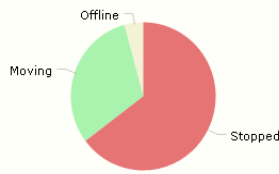
TEST
Version: 6.99

Dashboard

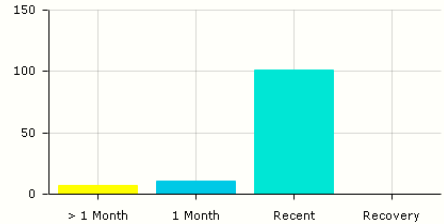
- Top Stops
- Heartbeats
- Recovery
- Alert History
- Zone Alerts
- SID
- Low Battery
- Maintenance
- Recipients
- Groups
- Support
- Logout

119

Vehicle Status



Activity Status



Welcome: TEST
Hudson Group

Distributor: Data Track 247
Effie Dror
1-718-395-2239
support@datatrack247.com

Version: 6.99

Logout

Navigation icons: Home, Refresh (51), Search, Edit, Help, Export, Map

119

Vehicle	Status	Group	Serial	Actions	Icon
<input type="checkbox"/> 2011 TOYOTA CAMRY-193674	Moving 37.8 mins/10 mph	All Groups	864906025398762		None
<input type="checkbox"/> 2012 TOYOTA CAMRY-148703	Stopped 7.9 hrs	All Groups	864906025492631		None
<input type="checkbox"/> 2012-TOYOTACAMRY-606874	Stopped 18.0 mins	All Groups	864906025396543		None
<input type="checkbox"/> 2013 TOYOTA CAMRY-218126	Stopped 5.1 days	All Groups	864906025332738		None
<input type="checkbox"/> 2013-TOYOTA CAMRY-639190	Stopped 1.8 days	All Groups	864906025338446		None
<input type="checkbox"/> 2014 TOYOTA CAMRY-140634	Moving 44.3 mins/1 mph	All Groups	864906025243935		None
<input type="checkbox"/> 2014 TOYOTA CAMRY-140719	Moving 24.4 mins/0 mph	All Groups	864906025486526		None
<input type="checkbox"/> 2014 TOYOTA CAMRY-140724	Stopped 5.1 hrs	All Groups	864906025355028		None
<input type="checkbox"/> 2014-TOYOTA CAMRY-140248	Stopped 12.2 hrs	All Groups	864906025557730		None
<input type="checkbox"/> 2014-TOYOTA CAMRY-140585	Stopped 9.7 mins	All Groups	864906025396303		None
<input type="checkbox"/> 2015 CHRYS 300-781274	Stopped 13.8 days	All Groups	864906024757158		None
<input type="checkbox"/> 2015 CHRYS 300-792843	Stopped 1.7 hrs	All Groups	864906024779798		None
<input type="checkbox"/> 2015 CHRYSLER 300-860697	Moving 1.1 hrs/15 mph	All Groups	864906024748447		None

Car Service - Fleet Monitoring & Analytics

DataTrack 247
Fleet Management Solutions

TEST
Version: 6.99

- Dashboard
- Top Stops
- Heartbeats
- Recovery
- Alert History
- Zone Alerts
- SID
- Low Battery
- Maintenance
- Recipients
- Groups
- Support
- Logout

Map Satellite

2015 CHRYSLER 300-860719
2015 CHRYSLER 300-860697
2015 CHRYSLER 300-860719
2015 NISSAN ALTIMA-213620
2015 CHRYSLER 300-860700
2015 TOYOTA CAMRY-1035 ERTON
2015 NISSAN ALTIMA-272031
2015 NISSAN ALTIMA-159325
2015 NISSAN ALTIMA-890432
2015 CHRYSLER 300-860712
2015 NISSAN ALTIMA-371242
2015 CHRYSLER 300-860703
2015 TOYOTA CAMRY-161120
2015 TOYOTA CAMRY-160960
2015 TOYOTA CAMRY-300-860711
2011 TOYOTA CAMRY-193674
2015 NISSAN ALTIMA-356110
2015 CHRYSLER 300-860717
2015 CHRYSLER 300-860705
2015 TOYOTA CAMRY-160884
2015 NISSAN ALTIMA-272136
2015 TOYOTA CAMRY-160514
2015 TOYOTA CAMRY-140719
2015 TOYOTA CAMRY-157386
2015 TOYOTA CAMRY-148703
2015 TOYOTA CAMRY-158862
2015 TOYOTA CAMRY-161581
2015 CHRYSLER 300-860706
2012 TOYOTA CAMRY-148703
2015 TOYOTA CAMRY-077329
2015 TOYOTA CAMRY-160104
2015 TOYOTA CAMRY-158429
2015 NISSAN ALTIMA-372176
2015 CHRYSLER 300-860714
2015 NISSAN ALTIMA-396869
2015 NISSAN ALTIMA-376607
2015 CHRYSLER 300-860713
2015 HYUNDAI SONATA-122237
2016 FORD FUSION-154496
2015 TOYOTA CAMRY-159325
2015 TOYOTA CAMRY-157337
2015 NISSAN ALTIMA-487873

For Hire Mix - Fleets (Limo, buses, vans and sedans) Data Monitoring & Analytics

The screenshot displays a fleet management dashboard. On the left is a 'Control Panel' with a search bar and a table of vehicle data. The table includes columns for Map Label, Status, Speed, Heading, and Odometer. On the right is a map of New York City and surrounding areas, showing the real-time locations of various vehicles as colored icons with numbers. The interface includes navigation tabs for 'Map', 'Reports', and 'Set Up', and a top status bar showing '42' and '466 All Vehicles (508)'.

Map Label	Status	Speed	Heading	Odometer
13	788.8d			42232.5
ISUZU-NQR	38.8d			2109.6
*33 - Repair	321.7d			420922
50	83.7d			132916.2
101	93.9d			145354.5
RETURN TRUCK	368.9d			55607
422	1112.9d			33861.9
119	793.1d			302397.3
120	17 mph		W	353363.2
	93.8d			30751.7
LINC-LIMO OLD...	11 mph		SW	420226.6
accident-Ford E...	151.7d			131970.6
54 Vladimir-52...	1087.6d			30313.5
REMOVE	177.9d			40599.9
TAKE OUT-FRE...	1103.6d			59397.3
DEAD UNIT-EX...	1083.7d			509688.3
A-PLUS-72-RE...	1127.1d			84393.4
	92.8d			75725.9
2010 Lincoln MKS	1354.9d			23478.4
pending removal	599.4d			19829.7
Daniel	814.5d			112403
45	403.6d			38969.5
	180.2d			101997.3
unit termination...	1.4h			361050.8
REMOVE	727.8d			18726.9
To be Removed	689.4d			228441
X#01 SEDAN - ...	469.6d			154444.7
X#05 SUV - Su...	93.8d			41550.4
bad unit remov...	63 mph		NE	750228.9
#12 SS LIMO - ...	99.7d			131808.9
#11 S LIMO - C...	94.1d			32197.8

Luxury Limousine - Dashboard

The dashboard features a control panel on the left with a table of vehicle data. The table has columns for Map Lab, Status, Speed, Heading, and Odometer. The map on the right shows the New York City area with various colored lines representing vehicle routes and icons for individual vehicles. The top navigation bar includes 'Map', 'Reports', and 'Set Up' buttons, along with a user profile and 'All Vehicles (33)' indicator.

Map Lab	Status	Speed	Heading	Odometer
20	Green	9 mph	NW	62688.5
26	Red	4.8h		19501.8
67	Green	18 mph	NW	34148.2
33	Red	2.8d		74834
71	Green	52m		56622.8
69	Green	6 mph	N	38276
23	Red	27.3m		33417.5
74	Red	2.6h		59849.8
37	Green	64 mph	NE	53457.6
28	Green	2 mph	N	58955.6
68	Red	4.8m		43230.8
86	Green	5 mph	NE	13449.7
27	Red	7.5m		52052
66	Red	1h		36717.1
38	Green	58 mph	S	70150.9
21	Green	28 mph	SW	73829.9
24	Red	47.7m		57533.3
64	Red	12.4d		46350.7
31	Red	34.6m		16154.9
29	Green	32 mph	N	35199.3
25	Green	1 mph	N	19243.3
34	Red	6.8d		56873.7
30	Green	30 mph	E	33955.9
63	Green	1 mph	SE	43233.7
50	Red	29.5m		16585.1
36	Red	4d		17614
35	Red	1h		61679.5
62	Red	27.8m		42311.8
22	Red	1.1h		20606.5
77	Green	6 mph	MM	36273.7

Fleet Performance

Home Dashboard#2 Dashboard#3 Dashboard#4 Dashboard#5

Datatrack Fleet Demo
Version: 3.96

- Dashboard (8)
- Vehicles (2)
- Drivers (2)
- Get Report Now
- Auto Reports (2)
- Alert History
- Alert Setup (1)
- Zones
- Fleets (2)
- Users (1)
- User History
- Logout

Vehicle Status

Status	Count
Moving	8
Stopped	2

Idle Alerts

Idle Time (hrs)

Range (hrs)	Count
3.5-4.4	2
0.0-0.9	1
1.8-2.6	1

Stop Alerts

G-Vilations

Range	Count
56.2-70.3	1
14.1-28.1	1
42.2-56.2	1
28.1-42.2	1

Distance (km)

Range (km)	Count
0.0-24.4	1
73.2-97.6	1

Trip

Range	Count
45.0-60.0	1
0.0-15.0	1
15.0-30.0	1
30.0-45.0	1

Engine Hours

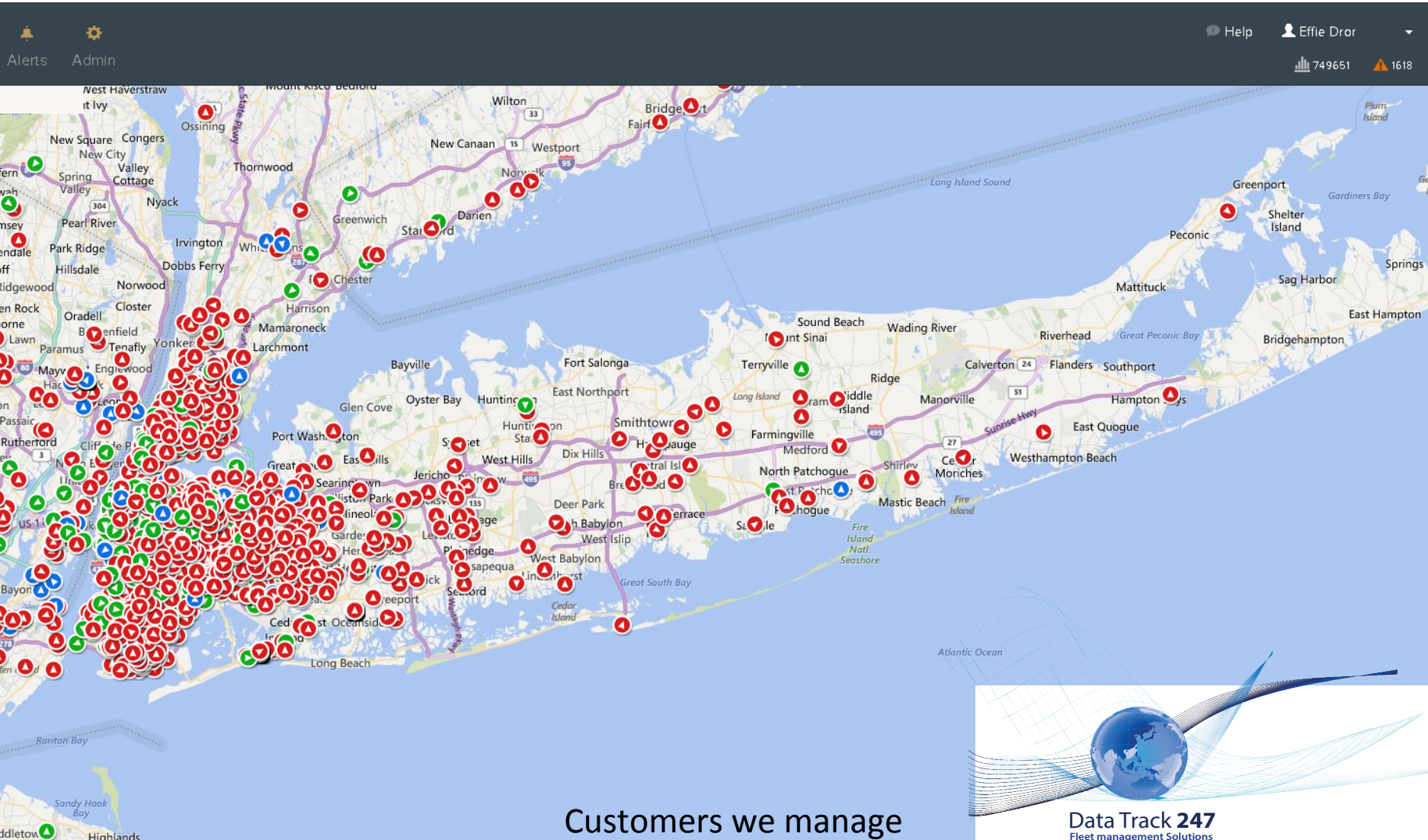
Range	Count
3.9-4.7	1
0.0-0.8	1
0.8-1.6	1
1.6-2.4	1

Move Time (hrs)

Range (hrs)	Count
6.0-8.0	1
0.0-2.0	1
4.0-6.0	1

Vision Zero's Concept for NYC's For Hire Industry - **SAVES LIVES** promoting higher safety, performance, efficiency,

practiced & delivered **daily** By **DataTrack247** !



Customers we manage

Data Track 247
Fleet management Solutions